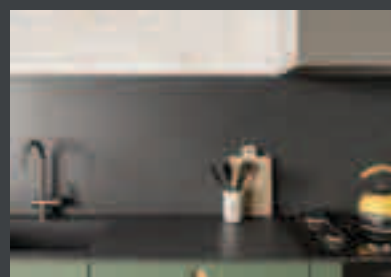
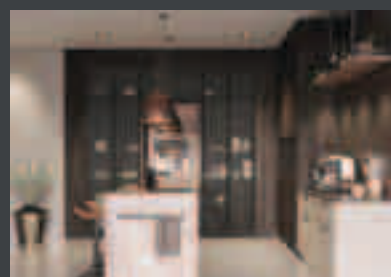
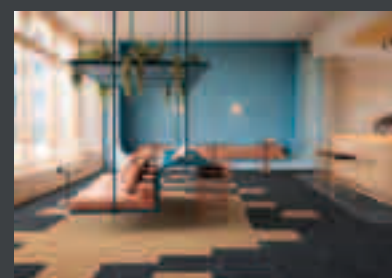
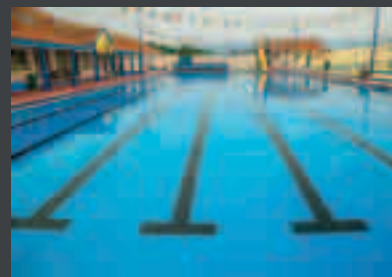
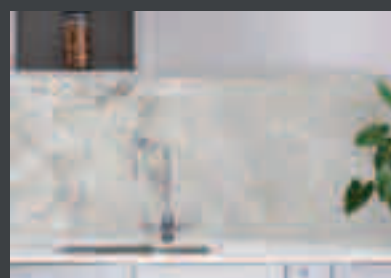
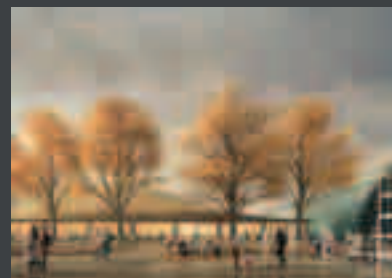
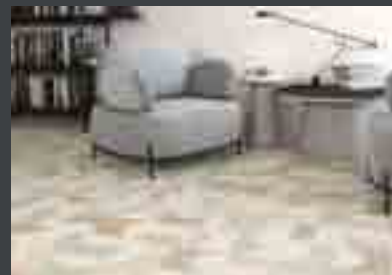


XTRA BUILD



BUILDING DESIGNS,VIEWS,
CONCEPTS & PROJECTS
JAN 2024



XTRA BUILD

CONTENTS

04 - DESIGN

a selection of architectural concepts, design and projects

16 - NEWS

building product development and company information

28 - INSIDE

interior design projects, products, systems and news

46 - 2023 REVISITED

some of our favourite stories of 2023

90 - VIEWS

a selection of opinions from the industry

98 - ONSITE

project awards, stories and installation news

Front cover photo courtesy of The Steel Window Association
www.steel-window-association.co.uk

No part of this publication may be reproduced or transmitted in any form or by any means without the publisher's consent. Xtra Build is published by L2 Architectural Media Ltd, Parkfield House, Park Street, Stafford ST17 4AL. Dedicated to our friend and colleague, Mike Mahon. Tel: 01785 291442 www.L2architectural.media

XTRA DESIGN

Highlights of this issue's Xtra Design include:

Award-winning interior design studio, Black & Milks reworking of Pico House, is breathing new life into one of London's most desirable addresses. OB Architecture have unveiled their latest project Strawberry Hill, a comprehensive refurbishment of an entire residence in the serene Hampshire countryside.

Wisdom Stockholm is a new scientific experiential arena situated in the courtyard of Sweden's National Museum of Science and Technology in Stockholm. The Wisdom Stockholm building encompasses a wooden architectural design creating an arched-shaped room of 1,325 square meters. Stora Enso has been the main partner and delivered sustainable wooden construction materials for the project.

Originally four 1860s Regency mansion houses, Mason & Fifth Primrose Hill is a 62-studio site from the brand spearheading flexible living concepts, Mason & Fifth.



Black & Milk Unveil Long-Awaited Design For Battersea Power Station Apartment

Award-winning interior design studio, Black & Milk's reworking of Pico House, is breathing new life into one of London's most desirable addresses. Created in collaboration with renowned architect Frank Gehry, the studio references its signature cosy luxury style throughout the refurbishment of the home in London's newly redeveloped Battersea Power Station. Demonstrating a characteristic attention to detail across the totality of the site, Black & Milk wanted to create a space that reaped the rewards of living in prime Central London whilst reinterpreting the city's luxuries into the apartment stylistically.

Pico House is located next to Battersea Power Station's Zone 1 London Underground Station, and overlooks a rich mix of restaurants, bars, offices and shops on Electric Boulevard, a pedestrianised high street, putting residents in the heart of the '15-minute' live, work, play neighbourhood.

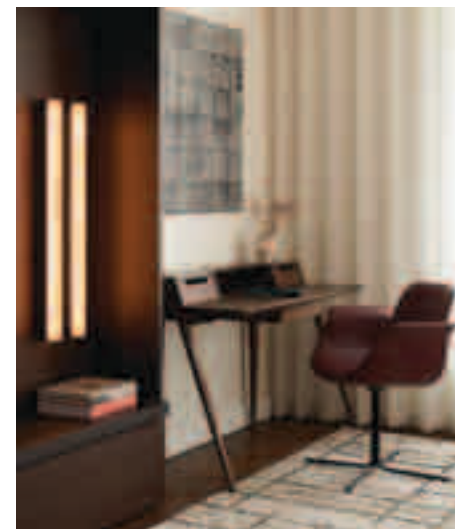
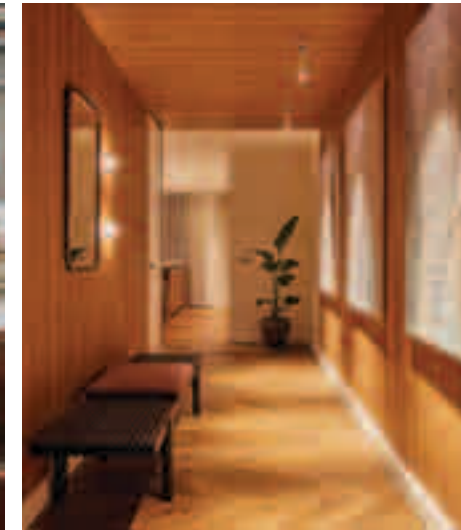
The three-bedroom residence spread over 1,052 sqft is full of character with fresh, contemporary interiors grounded in high-quality finishes and natural light. Designed for a modern resident, the design is built around flexibility and adaptability and is complete with playful and expressive touches. Whilst modern buildings have a lot to offer for contemporary design, there are of course, a myriad of challenges to be faced.

Olga Alekseev, Creative Director at Black & Milk comments, "The spatial configuration of the apartment was one of the fun challenges faced by our team. Due to the room's interesting layouts and particular angles,

an intelligent spatial layout was implemented redefining the living and dining area. We also had to have the apartment follow the sinuous shape of the building's exterior, creating unique properties with elegant curving walls. Horizontal bands break down the scale and add definition to the building, whilst floor-to-ceiling glazing, orientated to offer the best views of the Power Station, create interiors that are flooded with natural light."

She continues, "Throughout the space, wanted to clearly distinguish the retained and restored elements of the original building from contemporary additions. In our approach we therefore emphasised proposition, and enhancement of light, meaning no room is alike, with different design hues enticing the senses."

The studio takes inspiration from Gehry's bright, linear architecture with a neutral colour scheme, providing a series of refreshing spaces. Notable design points within the apartment include a well-appointed open-plan living area with a bespoke bar that encompasses a rotating door with backlit shelving, creating a place equipped for the regular entertainment of guests. With entertaining at home becoming a weekly staple in winter, this exquisite home-bar has everything necessary for an after-work tippie within arms reach. www.blackandmilk.co.uk



Strawberry Hill Forever!



OB Architecture have unveiled their latest project Strawberry Hill, a comprehensive refurbishment of an entire residence in the serene Hampshire countryside. This ambitious project was undertaken in response to the client's aspiration for a complete rejuvenation of the property.

OB Architecture is renowned for its ability to harmoniously blend creativity with contemporary innovation, crafting residences that meet the demands of 21st-century living. The focal point of this transformation is a striking circular Glulam timber structure designed in collaboration with Buckland Timber, replacing a dated 80s steel-framed conservatory. The original structure lacked modern comforts and thermal efficiency, necessitating a comprehensive overhaul.

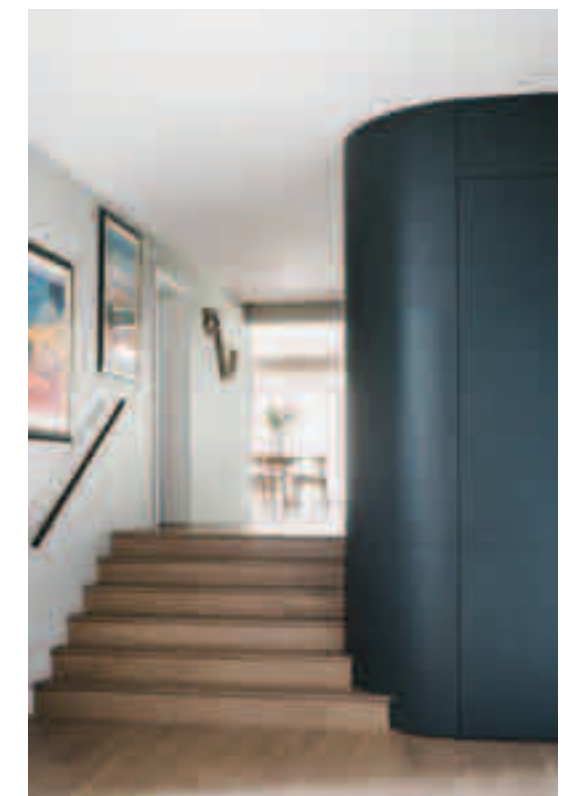


The alterations were meticulously calibrated to harmonise with the existing house's proportions, seamlessly integrating with the traditional rural architecture while introducing subtle contemporary details, as per the client's wish for a modern and playful living space.

The end result is a captivating contemporary space boasting 270-degree views of the garden, tennis court, and the idyllic Hampshire countryside. The circular form elegantly mirrors the terrace at the opposite end of the property, creating visual symmetry and cohesion. In response to the client's brief, OB also redesigned the entrance, through to the open-plan modernised kitchen, living, and dining area, and further into the new garden room.

On the lower ground floor, the spa and pool area underwent a modernisation process, with the addition of expansive plate windows that afford captivating views both in and out of the pool. A cinema and games room were also nestled deep into the plan of the lower ground floor. Throughout the project, a strong emphasis was placed on eco-conscious design elements.

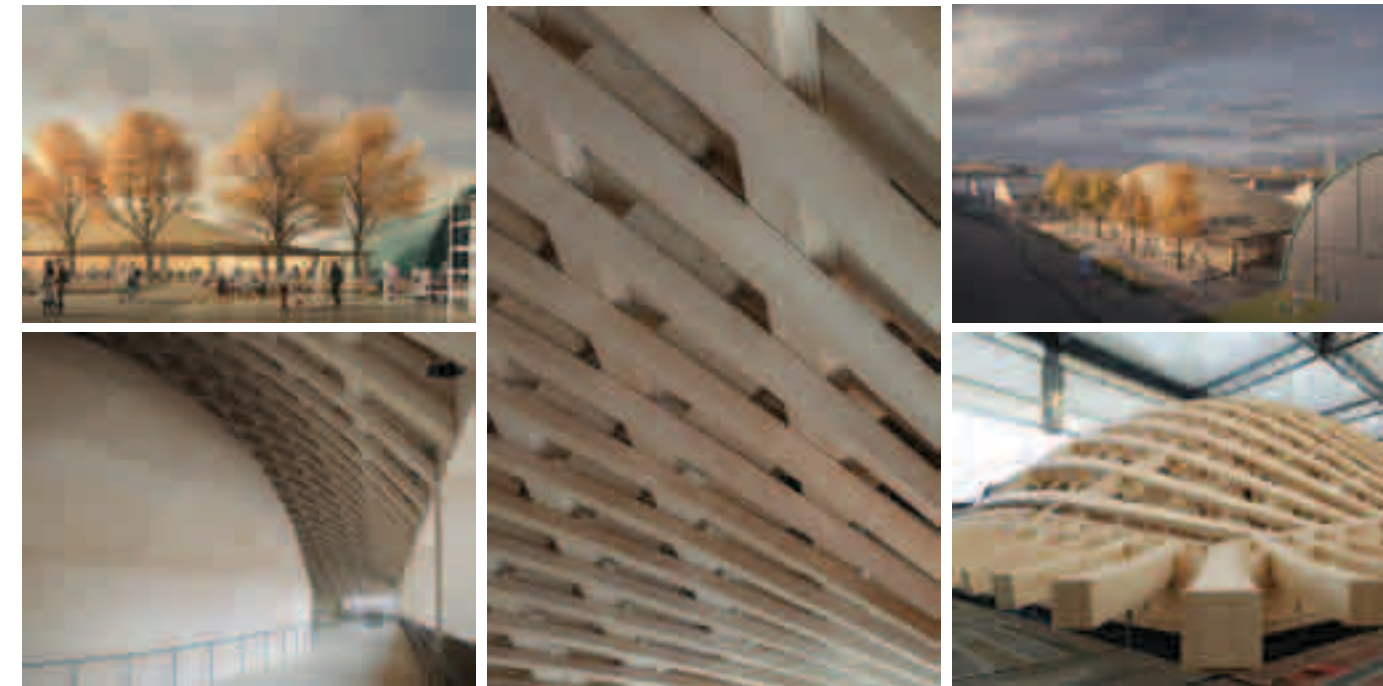
The interior decoration was entrusted to Wilson Martin Interiors, who collaborated closely with OB Architecture and the client to devise a scheme in perfect harmony with the building's character and architectural vision. The Strawberry Hill project stands as a testament to OB Architecture's prowess in seamlessly merging modern design with the charm of rural surroundings. www.obarchitecture.co.uk



Stora Enso Celebrates The Opening Of Wooden Architectural Landmark Building Wisdome Stockholm

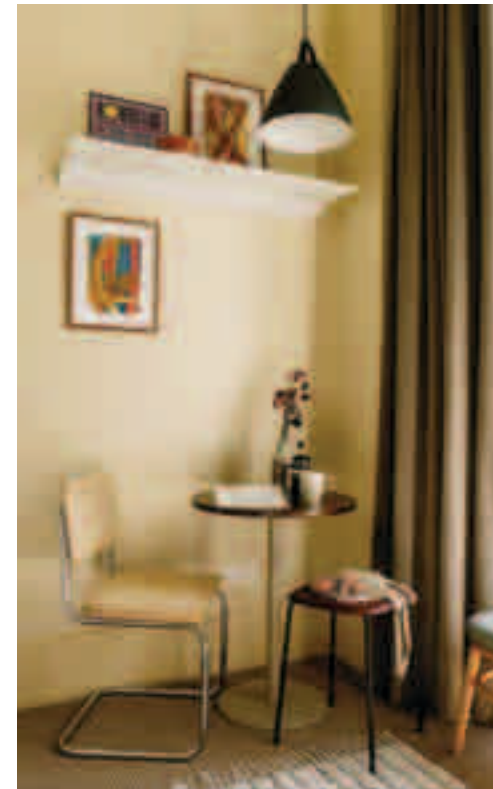
Wisdome Stockholm is a new scientific experiential arena situated in the courtyard of Sweden's National Museum of Science and Technology in Stockholm. The Wisdome Stockholm building encompasses a wooden architectural design creating an arched-shaped room of 1,325 square meters. Stora Enso has been the main partner and delivered sustainable wooden construction materials for the project.

"Wisdome Stockholm is truly a landmark building that stretches the boundaries of wooden architecture. Wood as a building material is an important part of the solution to battle climate change, enabling storage of CO₂ and a sustainable construction process. Today's inauguration showcases the unique design and sustainability benefits of building with renewable materials," says Lars Völkel, Executive Vice President, Stora Enso's Wood Products division.



The wood used for both the LVL (laminated veneer lumber) and CLT (cross-laminated timber) building elements for Wisdome Stockholm came from sustainably managed, certified forests in Sweden and Finland and stores in total 1,178 tonnes of carbon dioxide. The construction incorporates both curved and twisted beams, found in only a few locations worldwide. Situated at the heart of the exhibition hall is a substantial wooden dome equipped with state-of-the-art visualisation technology. "

Being a part of this project from the early stages, we were able to find an innovative way to use standard industrial products, such as CLT and LVL elements from our Sylva by Stora Enso range, to achieve the asymmetrical structure of the building without sacrificing the fantastic design," says Jessika Szyber, Business Development Manager at Stora Enso. www.storaenso.com



Studios are available for short-term stays. Longer-term resident contracts include all bills in one convenient monthly fee, with just one month's notice to leave, creating a unique space that is as flexible as needed. Mason & Fifth is one of the pioneering brands behind the expanding Flexible Living marketplace. The brand's previous venture in Bermondsey had an immediate explosion in popularity with 100% occupancy since opening. (cont...)

Flexible Accommodation Pioneers Mason & Fifth To Launch Second Building In Primrose Hill



Originally four 1860s Regency mansion houses, Mason & Fifth Primrose Hill is a 62-studio site from the brand spearheading flexible living concepts, Mason & Fifth. The Primrose Hill site follows the success of the brand's existing location in Bermondsey. Redesigned and refurbished by award-winning architects Red Deer, the Grade II Listed building boasts 62 furnished, private studios - each with a kitchen and en suite, a shared living, working & dining area, a private garden and a yoga pavilion.



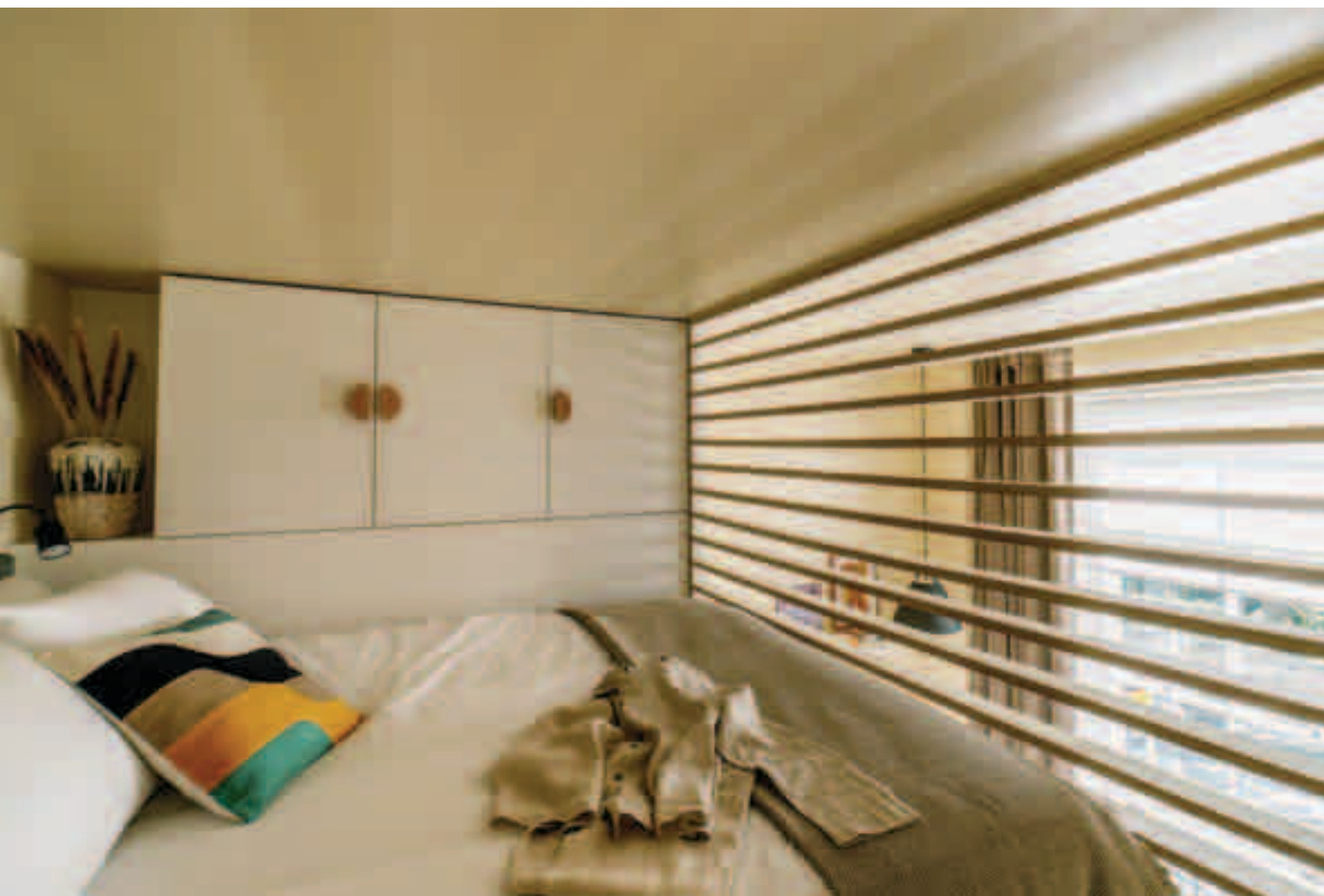
(cont...) Mason & Fifth was established by David Silver, who co-founded investment advisory firm Burlington Partners and was a Director at City-fringe commercial agency Richard Susskind, along with Ben Prevezer, who founded experiential marketing, content and placemaking agency Offbeat Network, working with some of the world's largest FMCG brands and partnering with some of the UK's leading developers to operate and activate their projects.

Mason & Fifth co-founder Ben Prevezer said: "Primrose Hill is our next exciting venture breaking down barriers in the London marketplace. We live, stay, work, and connect in different ways than we did before. Remote and hybrid working have been huge players in this shift, and our living spaces need to catch up with this new and progressive approach. Across the board, it's becoming harder and harder to find a space that can fit the needs of the modern Londoner."



Mason & Fifth is a concept designed to facilitate a sense of living freely without compromising on community. Ben Prevezer notes that at Mason & Fifth, residents benefit from a "beautifully designed space in a great location and the convenience of everything being taken care of so you can move in and out with ease, have a comfortable space to work plus peaceful private spaces and a friendly community to plug into and share experiences with."

"We've put flexibility at the forefront of our entire model. It doesn't matter whether you're staying for a weekend or much longer, you deserve to have somewhere that is as flexible as you are." Tours are now available to book at Mason & Fifth Primrose Hill via the Mason & Fifth website. <https://mason-fifth.com>





XTRA NEWS

Highlights of this issue's Xtra News include:

The A. Proctor Group Ltd has been at the forefront of pitched roofing membrane technology for over 25 years. Proctor Air® is the result of this quarter century of experience.

Wetroom specialist, Marmox is returning to the Surface Design Show with the uniquely flexible Slicedstone range taking centre stage on Stand 425.

Nullifire, a leading name in fire stopping technology, is proud to introduce the highly-anticipated Nullifire Solution Selector - Nullifinder. The Königstone team is looking forward to showcasing new and exciting products at the industry famous, KBB at the NEC in Birmingham.



Proctor Air® Added To Next Generation Products At A. Proctor Group

Innovation has run through the Proctor family since its earliest records, and since taking over in 2012, our Managing Director, Keira Proctor has continued this tradition, building on this foundation of trust, honesty, and hard work from the very same desk where her father and grandfather made it the company that it is today.

The A. Proctor Group Ltd has been at the forefront of pitched roofing membrane technology for over 25 years. 25 years working with it's

partners across the construction industry, helping to evolve standards, and delivering quality results on projects across the UK and around the world. Proctor Air® is the result of this quarter century of experience on sites and on drawing boards, listening and responding to the challenges faced by the industry. The next evolution of roofing underlay technology; Proctor Air has been developed and manufactured to our precise specifications and requirements.

This ensures the on-site performance of it's material mirrors the off-site performance, while a 15 year warranty ensures peace of mind for any project, now and in the future. Hydrophobic additive in all three layers of this next generation product amplifies water holdout, and this, alongside optimised levels of permeability to both air and moisture vapour, Proctor Air delivers the most robust and dependable performance. This means Proctor Air can be specified on all roof types not just without low- and high-level ventilation, or a vapour control layer, but with confidence. www.proctorgroup.com

Schlüter®-Systems Launches Customisable Washbasin/Vanity Unit

Building on the success of its acclaimed KERDI-BOARD, Schlüter-Systems has launched the customisable, prefabricated KERDI-BOARD-W, enabling homeowners as well as architects and contractors to create a vanity unit quickly and cost-effectively. KERDI-BOARD-W, like the company's durable and waterproof, extruded rigid-foam KERDI-BOARD, is immediately ready for tiling, while it is light weight and easy to handle; and can be combined with the KERDI-LINE-VARIO drainage profiles. For increased versatility, the 1¼ inch connection thread included in the set is ideally suited for combination with commercially available siphons or traps.

The ready-to-use pack also contains KERDI components for secure waterproofing: including the permanently attached, elasticated KERDI collar and the KERDI-KERS corner pieces (right and left), which facilitate reliable connection to the adjoining wall. Two variations from the KERDI-LINE-VARIO range of drainage profiles are available to choose from, which should be fitted over the outlet. These can be individually cut to size, are height adjustable and are shipped with two matching end caps. Designed to be used with a wall mounted tap, the unit can easily be adapted to a multiplicity of on-site situations.

It can be installed as a floating version with the optionally available wall brackets or can be supported on legs made of 50 mm thick Schlüter®-KERDI-BOARD. To finish a project off with a sophisticated flourish, Schlüter's LIPROTEC system offers an extensive selection of profiles for custom illumination of the washbasin/vanity unit. As well as the comprehensive product information, design details and demonstration videos available on its website, Schlüter-Systems in the UK also offers a technical advisory service ready to help both property owners and professionals. www.schluter.co.uk



Marmox At The Surface Design Show

Wetroom specialist, Marmox is returning to the Surface Design Show (6-8th Feb 2024) with the uniquely flexible Slicedstone range taking centre stage on Stand 425. Introduced to the UK market in 2023, the natural stone veneers offer the adaptability to be applied across uniquely-shaped walls, spa bath surrounds and other features where water resistance is as important as appearance.

They follow on from the success of the natural stone mosaics, also launched here by Marmox, offering bathroom installers significant speed advantages when compared to traditional tiling: saving costs on materials and labour. Now designers and tilers are acclaiming the ultra-slim sandstone sheets that are available in two sizes - 1220 x 610mm and 2100 x 1050 mm and weighing between 2.5 to 3.0 kg/m². Slicedstone offers low moisture absorption and features a specially formulated decoupling layer meaning sheets can be applied to curved surfaces both indoors and out.

Marmox Marketing Manager, Grant Terry, comments: "After success cladding some striking properties in Egypt, the main interest in the UK has come from interior designers, with one of the first projects nearing completion being a London house where half a dozen sheets have been supplied for use in the main bathroom/spa room where the interior designer, Revolve Interior Design, is very pleased with the effect." www.marmox.co.uk



Rain, Snow, Ice? No Problem For West Fraser's Caberdek Flooring Leading The Pack For Housebuilders

CaberDek is one of West Fraser's flagship quality flooring products designed to ensure that, whatever weather befalls UK construction sites, work can continue cleanly and safely; this is especially important with today's tighter than ever timelines. It is made from the same moisture-resistant particleboard as the standard CaberFloor P5 and features a protective non-slip film applied to its upper surface.

In most new-build projects, the upper floors of a residential property are installed before the roof goes on, with the inevitable result that the new floor is left open to the elements for days or even weeks. CaberDek's protective film prevents rain and frost damage to the new floor surface as well as providing a safe non-slip working surface for the construction team. CaberDek can be left exposed, and remains BBA approved for up to 42 days without risk of damage, provided it is correctly installed with West Fraser's CaberFix adhesives.

Even after the building is weather-tight, the floor surface remains protected while following trades, such as plastering and painting, come onto site. When work has finished, the protective film is simply peeled off to reveal a pristine particleboard floor ready for covering. <https://uk.westfraser.com>



Aluprof At The Passivhaus Conference December 2023



*By Wojciech Brozyna, Managing Director
Aluprof UK Limited.*

Organised by the UK's Passivhaus Trust, the 2023 UK Passivhaus Conference was a hybrid event held at McEwan Hall on The University of Edinburgh campus. Over the two day conference over 600 speakers and delegates explored the adaptability of Passivhaus, its implementation and benefits over a diverse range and scale of projects around the UK, plus its future applicability for all homes throughout Scotland.

Aluprof were delighted, once again, to support the event as a sponsor taking the lead when it comes to the specification of high thermal performance windows, doors and facade systems used in Passivhaus construction. The event was attended by Paul Sherman, Aluprof Sales Consultant and Neil Garner, Aluprof Major Projects Consultant. 'Scotland leads the way' was the theme for the Passivhaus Conference, the biggest held in the UK to date.

There was a great deal of interest at the event following Scotland. Parliament's decision to adopt a version of the standard next year. Keynote speaker Patrick Harvie MSP, 'Scottish Government Minister for Zero Carbon Buildings, Active Travel and Tenants Rights', gave an update on how the 'Scottish equivalent to the Passivhaus standard' policy is developing. Leading the way, Scotland is the first nation to adopt the Passivhaus standard, or its equivalent, previous adoption by Brussels, Vancouver, Massachusetts, and Heidelberg have only been adopted on a municipality level.

The Passivhaus standard is not new to Scotland, it was recognised some time ago that upfront investment in the standard across new construction was beneficial in the long term with significant benefits to health and the reduction of carbon emissions. The conference showcased a wide range of new and completed projects which included schools and social housing across the region.



Sarah Lewis, Research & Policy Director, Passivhaus Trust, commented on the growth of school projects adopting the standard, "An innovative funding mechanism from the Scottish Futures Trust has encouraged the building of schools to the Passivhaus standard in Scotland. Projects receiving funding need to meet a clean energy target. Funding may be reduced based on any performance gap post-completion. The Passivhaus standard effectively eliminates the performance gap, de-risking the securing of funding. It has been impressive how swiftly the industry, supply chain, and clients have adjusted to delivering to the Passivhaus standard in the education sector."

With the growth of projects adopting the standard, Aluprof were on hand at the Passivhaus exhibition area to introduce their two curtain wall systems and two window and door systems that carry Passivhaus certification: Aluprof's curtain wall system MB-SR50N Hi+, offers a slim capped mullion transom system of just 50mm. The system uses polyethylene profiles to offer high levels of insulation, allowing the system to reach a U f from 0.59 W/(m² K).



The high level of thermal insulation is coupled with excellent weather resistance of up to 1,200 Pa for both airtightness and watertightness. Aluprof's curtain wall system MB-TT50 further enhances the abilities of the MB-SR50N Hi+ by allowing a greater thickness of glass to be accommodated. The system uses polyethylene profiles to offer high levels of insulation allowing the system to reach a class leading U f from 0.5 W/(m² K). The high level of thermal insulation is coupled with an improved weather resistance of up to 1,350 Pa for airtightness and up to 1,800 for watertightness.

Aluprof's window and door system MB-104 PASSIV SI and MB-104 PASSIV AERO offers openable windows that can offer an insulation value of U w from 0.52 W/(m² K) whilst retaining high levels of weatherability, Class 4 for air permeability for an openable window and 1,800 Pa for watertightness for an openable window. Aluprof UK takes pride in supplying Passivhaus certified windows and curtain walling systems for one of the world's largest Passivhaus-rated student accommodation projects, nearing completion.



Situated at the Frenchay Campus, the new accommodation building for the University of the West of England (UWE) spans approximately 65,000m² and offers 2,250 new student residences. Additionally, Aluprof systems and products are featured in the ambitious 'Greenhaus' project, set to become the largest Passivhaus social housing scheme in Manchester and the North West of England.

This nine-storey development, located in Chapel Street, Salford, comprises 96 affordable homes. All Passivhaus enquiries received by Aluprof are dealt with by experienced technicians who can help choose the right configuration for any project. As important as the right choice of product, Aluprof are also able to offer design assistance for the structure surrounding the system to ensure reveal cold bridging is reduced to an absolute minimum.

Aluprof are proud to be one of Europe's largest aluminium systems companies. Specification support is available through the company's website at aluprof.co.uk, directly from their UK head office in Altrincham or from their London office at the Building Design Centre by phoning +44 (0) 161 941 4005.



Finding The Right Fire Stopping Fit For Your Needs With Nullifire's New Solutions Selector!

Nullifire, a leading name in fire stopping technology, is proud to introduce the highly-anticipated Nullifire Solution Selector - Nullifinder. This digital tool promises to set new standards in the fire safety industry by providing a comprehensive, user-centric approach to accessing and utilising fire stopping solutions.

Launching early 2024, Nullifinder is more than just a tool; it's a gateway to a world of trusted and tested fire stopping solutions. With a mission to enhance accessibility to technical drawings and product data, improve the overall customer experience, and increase awareness of product testing, Nullifire's Solution Selector is poised to transform the way professionals and partners in the construction industry operate.

The heart of the selector lies in its simplicity. This tool features a "My Detail Packs" button, allowing users to easily access their preferred solutions and creating their own packs. It also provides the convenience of downloading technical drawings as a pack, simplifying the often complex process of gathering essential data for design and build projects.

The Solution Selector is seamlessly embedded on Nullifire's website, making it easily accessible for both desktop and mobile users. Phase 1 of the launch is scheduled for January 2024, with continuous improvements planned for Phase 2.

Nullifire acknowledges that the success of the tool depends on its ability to meet the specific needs and expectations of the industry. Therefore, some partners and professionals have been invited to explore the selector via a dedicated landing page and shared their insights through a live feedback form upon the official launch of the platform.

This collaborative approach helped Nullifire's team to ensure that Nullifinder evolves into an indispensable resource tailored to the industry's demands. Nullifire's Solution Selector marks a significant step forward in fire stopping solutions. www.nullifire.com

Königstone Launches New Range At KBB 2024, Stand M114, Nec, 3-6 March 2024

The Königstone team is looking forward to showcasing new and exciting products at the industry famous, KBB at the NEC in Birmingham. 2024 will see the leading worktop specialist launch the new KönigCeramic range on stand M114. Visitors will see the stunning new surfaces and speak to a Königstone expert who will be able to answer any questions.

KönigCeramic is a high-quality sintered surface with beautiful, printed designs that replicate natural stone. Available in eight different colours, the slabs are crafted using carefully-sourced natural minerals that are compacted to high density and fired to a temperature of over 1,200 degrees.

The Königstone Athena Collection has also been entered into The Innovation Awards so stay tuned to see if they will be shortlisted in the top ten! The Athena Collection contains five innovative Quartz surfaces featuring printed designs that replicate the intricate details and defined veining of natural stone more realistically than any other Quartz surface. www.konigstone.co.uk



New Stratton Mk3 System Selector From Hamworthy Heating Simplifies Product Selection

Following on from the launch of its latest Stratton mk3 wall-hung condensing boiler range, Hamworthy Heating is pleased to announce the introduction of its new Stratton mk3 System Selector tool, designed to help simplify the product selection process for cascade arrangements. For installations that require more output delivered flexibly, a Stratton mk3 cascade system can be installed with up to 6 boilers at a time to meet building demands effectively. Wall hung cascades have grown in popularity within the past decade due to the additional turndown ratio and redundancy that this kind of installation offers.

Available with a range of plate heat exchangers and low-loss headers (including bespoke frame and header kits), the new Stratton mk3 System Selector identifies all the Hamworthy products needed for an efficient heating system. By answering a few simple questions from a drop-down menu, such as the number of Stratton mk3 boilers to be cascaded, the highest single boiler output and gas type, the new Stratton mk3 System Selector will list all items required on screen. It can also be downloaded as a PDF or emailed directly for added convenience. Offering exceptional system tolerance, the Stratton mk3 is backed by a five-year heat exchanger warranty. www.hamworthy-heating.com

Hamworthy Launches New CIBSE Accredited Heat Pump CPD And White Paper

Hamworthy Heating has announced two new resources – ‘An Introduction to Heat Pumps’ CIBSE Approved CPD and ‘The Hamworthy Roadmap to Decarbonisation’ White Paper. Ideal for specifiers and installers wishing to understand more about heat pumps and the latest industry developments, ‘An Introduction to Heat Pumps’ is the latest CIBSE-accredited Continuous Professional Development (CPD) course from Hamworthy Heating. Covering the main heat pump operating principles such as energy, refrigeration, technology and efficiency, the latest CPD offering from highlights the different types of commercial heat pump equipment available and explores the influencing factors which need to be considered before heat pump selection.

Also focusing on heat pump design principles, ‘An Introduction to Heat Pumps’ looks at the main points to consider when it comes to designing a heat pump system, before concluding with an overview of market drivers and government incentives. To further support the transition to low carbon heating and hot water, the new ‘Hamworthy Roadmap to Decarbonisation: Planning Your Journey’ White Paper features an in-depth examination of decarbonisation. Looking at the current landscape; the latest White Paper from Hamworthy discusses the challenges of implementing a roadmap to decarbonisation and how heat pumps play a pivotal role in this transition. www.hamworthy-heating.com



New ‘Quiet’ Monobloc ‘S’ Heat Pump From LG...

The heat pump revolution is underway in the UK with more and more housebuilders and social housing providers opting for heat pumps rather than the traditional fossil fuelled gas and oil fuelled boilers. The new, easy to install, highly energy efficient air to water heat pumps available now are proving to be hugely popular, with LG already picking up a number of sizeable contracts from social housing providers through its distributors.

The Therma V Monobloc S air to water heat pump from LG Electronics is characterised by its quiet operation, with the ‘S’ in its name standing for ‘silence’. Using R32 refrigerant the unit can operate at low ambient temperatures to deliver renewable, energy efficient heating. bLG says the new version Monobloc also requires lower amounts of refrigerant compared to the previous model – 16.7% - reducing emissions and lessening its environmental impact still further. The near silent operation means units up to 9kW can be installed at the minimum of distance – 4m and the 16kW units at a distance of 5m from neighbouring homes. The new ‘S’ version is very quiet with a new insulated compartment for the compressor which insulates the sound and a new design on the fan blades, meaning this is the quietest unit produced by LG to date. partner.lge.com/uk



Omnie Adds AL Hex Heat Diffuser Technology To UFH Systems

OMNIE, the award-winning UK underfloor heating specialist, is incorporating the advanced AL HEX aluminium diffuser technology on all its foiled underfloor heating systems. The patented AL HEX foil, with its trademark hexagonal pattern,

increases the in-channel foiled surface area that is in contact with the warm water pipe. The result is greater heat output, faster heat transfer and a more even heat distribution across a floor area, plus it avoids the risk of damage due to heat ‘striping’.

Striping is caused when heat in the warm water pipe doesn’t diffuse into the floor panel effectively and, instead, creates hot spots and hot lines on the floor surface finish. Prolonged exposure to striping can damage both the floor finish and the subfloor, particularly if the installer raises the temperature of the water to try and improve the diffusion. “AL HEX is a real step forward for underfloor heating particularly when the industry is moving away from gas boilers and towards renewable heat sources,” says Brendan Hourican, OMNIE’s Managing Director. “Because it is so efficient at transferring heat, AL HEX works very well with lower water temperatures. This means it improves the performance of the underfloor heating, which is a huge benefit when the system is paired with a heat pump. Homeowners want to feel the benefit of every kilowatt of energy they are paying for, to lower the cost of their heating and still stay warm in winter. AL HEX diffuser foil fitted to their underfloor heating panels will help them achieve this.” www.omnie.co.uk



Stelrad K3 Radiators Contribute Towards Barnsley Hospital Decarbonisation Project

Stelrad radiators are the heat sharing choice of projects providing homes and commercial properties up and down the country and increasingly for large public buildings like hospitals, schools, colleges and universities. Many of these projects are seeing heat pump technology integrated with the heating and cooling systems installed in both upgrades and new build facilities, and radiators, when sized properly, work well with ground source and air source heat pumps, sharing heat around the buildings.

Stelrad’s K3 radiators are manufactured with three panels and three sets of fins to maximise the heat available from a low temperature heating system and allow radiators to contribute in a big way to the decarbonisation of our heating systems here in the UK and Ireland. Barnsley Hospital is one such project where radiators and heat pumps combine to provide impressive heating and hot water provision for a major NHS facility in South Yorkshire.

The project has seen the specification of more than 300 Stelrad K3 radiators, to share the heat from the low temperature heating system that is generated by five air source heat pumps that have been installed at the hospital. www.stelrad.com



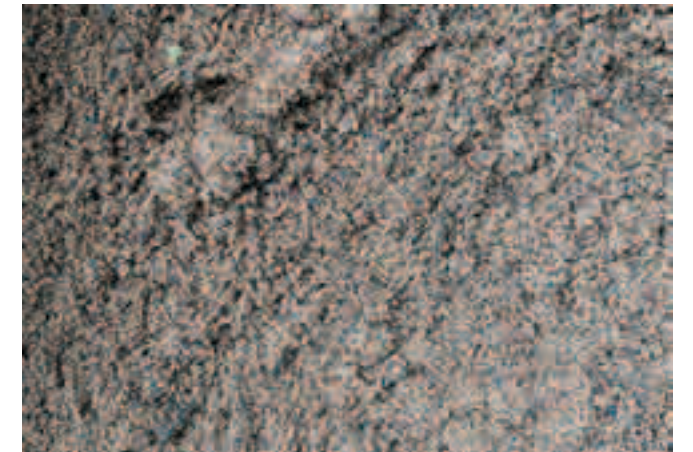
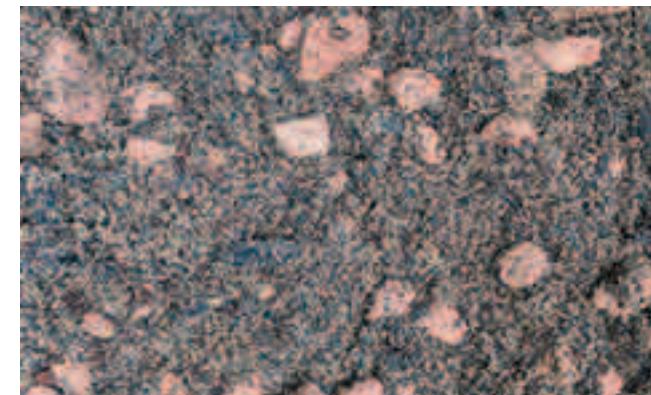
Make Better Choices On World Soil Day, Says Boughton

On World Soil Day in December, leading topsoil and growing media supplier, Boughton called on landscapers, specifiers and garden designers to take time to consider the benefits of natural soils. Boughton – a firm advocate for single-source natural ‘as dug’ topsoil – is keen to use this significant day to highlight the impact using natural topsoil and sourcing products sustainably can have on both your landscaping projects and the environment.

As World Soil Day focuses on soil health and awareness in order to maintain diverse ecosystems, Boughton wants to remind the industry about the significant benefits of using a natural soil. Not only do these soils have good body and great moisture retention qualities – ideal for modern landscaping projects, given predictions of water shortages in the future – but Boughton soils also have a low pH, high organic content and boast both existing and developing organism biomass. The latter is a huge plus for planting schemes, considering the vital role microbial activity plays in the development and growth of flora within a soil.

In fact, some natural topsoils have been establishing themselves for thousands of years, allowing their nutrient balance time to level out and cycle on a natural rhythm. This means they can provide host plants with accessible nutrients quickly, once installed. There are a number of enormous advantages to using sustainably sourced natural soils, which is why Boughton has supplied its products to several high-profile construction and landscaping projects, including the redevelopment of Battersea Power Station, which was awarded the title of ‘Grand Award Winner’ at the recent BALI National Landscape Awards.

The team behind the gardens, Willerby, also received the Principal Award win within the ‘Regeneration Scheme - Over £500k’ category for the second phase of the roof garden. Within these gardens, Boughton’s IN1 substrate was selected to support the scheme due to its ability to support larger plants and to be installed at depths from 100 – 500cm, thanks to its sandy texture.



Additionally, Boughton’s IN1 substrate offers significant moisture retention qualities, making it the perfect choice when so many plants are vying for attention within this three-hectare site. IN1 from Boughton continues to meet and exceed all G.R.O guidelines. Elsewhere Boughton’s Lightweight Substrate was used to provide growing media where weight loading for the green roof needed to be lighter than traditional green roof schemes, whilst Rootzone completed the offering. Supplied as a ready-mixed solution, Rootzone provided better planting conditions throughout the scheme.

Boughton supplies a range of natural topsoils to suit a wide variety of applications and projects. All of its ‘as dug’ certified topsoil can be supplied with an independent soil analysis, having been tested by independent MCERTS laboratories. The supply chain for Boughton’s soils is also fully transparent, with complete traceability.

Boughton launches new SuDs Soils - Boughton’s already extensive product portfolio is about to expand further with the introduction of three new SuDs soils, designed by the experts at The Environment Partnership. BLRG Rain Garden Soil, BLHP High-Permeability Soil and BLMP Multi-Purpose SuDs Soil all draw their inspiration from Boughton’s market-leading green roof substrates; together offering even more soil solutions for a wide range of landscaping projects.

BLRG Rain Garden Soil is based on an extensive green roof substrate and is designed to support rain garden construction and planting via a free draining mixture with a large amount of porosity. A small amount of topsoil has been blended into the mixture to slow down infiltration, or saturated hydraulic conductivity, whilst also providing more body to the mixture to ensure water retention for a much longer period.

In doing so, BLRG offers increased water storage performance, and improved water quality benefits. Boughton’s new BLRG is the perfect choice for those planting schemes that prefer a freer draining substance, but one that is sometimes saturated.

BLHP High-Permeability Soil is a high-permeability soil, designed to be used in shallow swales, such as those that border pavements and paths. Sand dominant with additional green waste compost and coir fibre inclusion, BLHP is ideal for creating stable conditions with strong water retention capabilities.

Additionally, BLHP is suitable for supporting the use of drought tolerant grass species. Finally, BLMP Multi-Purpose SuDs Soil is – as the name suggests – a multi-purpose blend of sand, PAS 100 green waste compost, crushed brick and coir, designed as a layer for swales and rain gardens, to support a range of intensive vegetation.

Jason Lock, Boughton’s Business Development Manager, said: “At Boughton we are on a mission to bring to market soil solutions for all gardens and landscape architecture projects. Our new range of SuDs continues to build on our expertise for all things ‘as-dug’ and natural, without compromising on performance and reliance, and open up new opportunities for landscaper, garden designers and specifiers who are looking for soils that will not just support planting schemes but will enable them to thrive more than ever.” www.boughton.co.uk



XTRA INSIDE

Highlights of this issue's Xtra Inside include:

Cosentino, the global leading company in the production of sustainable surfaces for architecture and design, announces Dekton® Ukiyo, a new textured collection that features linear fluting and offers livable luxury with the durability of Dekton®.

Industrial kitchens are often designed in dark tones; yet the new Urban Nude kitchen from Keller introduces light shades such as sea salt, pictured here, from the trendy greige palette.

For a look of luxury, heritage, class and beauty, specifiers are increasingly using steel for different areas in the home choosing a Steel Window Association (SWA) member for quality assurance and technical guidance.

F. Ball and Co. Ltd.'s Stopgap 300 smoothing compound has been used to create a hard-wearing base for a flooring installation at Channel 4 News' main broadcast studios in Leeds.

Cosentino Announces Dekton® Ukiyo, A First of Its Kind Fluted Collection with Designer Claudia Afshar



Cosentino, the global leading company in the production of sustainable surfaces for architecture and design, announces Dekton® Ukiyo, a new textured collection that features linear fluting and offers livable luxury with the durability of Dekton®.

Created in collaboration with the internationally recognised high-end interior and product designer, Claudia Afshar, the collection is available in ready-to-install fluted tiles, one of the first offerings of its kind in the industry. Its textures bring distinctive depth and dimension to any space, be it residential or commercial. Dekton® Ukiyo is inspired by Japanese and contemporary design and celebrates the art of minimalism and embracing the present.

Ukiyo means to "live in the moment" and the Dekton® collection is designed to awaken the senses and evoke a feeling of wellness by achieving a beautiful, calm state in the space. It embodies a rich palette of sensations, showcasing geometric yet smooth structure that creates harmonious designs both inside and outside.



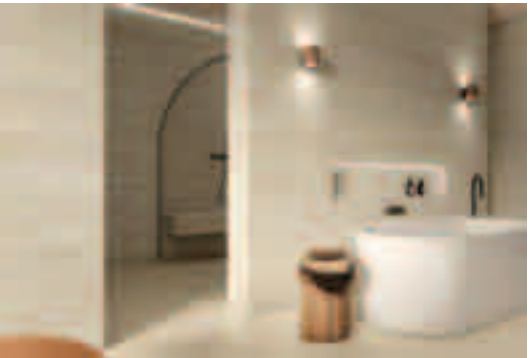
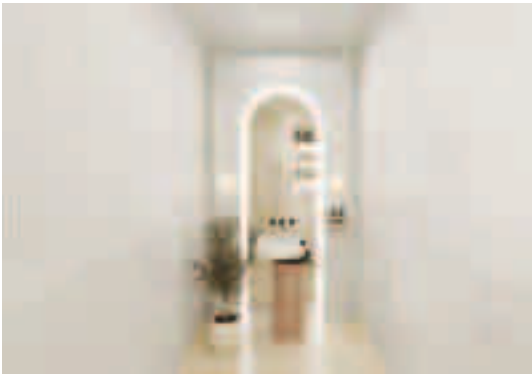
"Playing with texture is timeless, and it is so important in all materials, not just fabric" said Claudia Afshar. "I have always been inspired by the materials found in nature and making the spaces I design as comfortable, warm and authentic as possible. Ukiyo is calming yet simplistic, and the colorways and fluting are romantic, but also contemporary and masculine to achieve balance."

Especially designed for vertical cladding application, Dekton® Ukiyo will be available in matte finish and two fluting options: GV2 with groves set 25 mm apart and measure 5mm wide and 3 mm deep; and GV3 with groves set 11 mm apart and are 4mm wide and deep. Both will come in tile size 17.7 inches by 118 inches (450 mm x 3000 mm).

To launch the Ukiyo offering, Afshar hand-selected five existing Dekton® colorways: Bromo, Kreta, Nacre, Umber, and Rem to provide a comprehensive color palette to work independently and together. Dekton® products are full life cycle carbon neutral.

Dekton® Ukiyo is ideal for a virtually limitless range of vertical applications ranging from facades and fireplaces to custom furniture and so much more.

"Every day I strive to think outside the box in order to create something unique, yet special for each project. This collaboration offers just that and I am so thankful to the entire Cosentino team for bringing this collection to the market" said Afshar. www.cosentino.com/en-gb



Stunning Sutton Bonington Property Restored With Schlüter Solutions

Tucked away in Sutton Bonington in Nottinghamshire sits a beautiful Grade II-listed home which was carefully brought back to life with a stunning renovation. Andrew Hinds Interiors was tasked with renovating two small rooms and turning them into one large bathroom. Preserving the history of the building was a key aspect of this renovation which came with several challenges due to its age. Working with Schlüter-Systems products for over three years, Andrew and his team knew just what they needed when selecting a reliable solution to protect their client's bathroom. The existing plumbing and pipework were removed and replaced with new pipework. New electrics and plastering were followed by the installation of a selection of Schlüter-Systems products, all with the aim of maximising the lifespan of the new room.



Starting in the shower area, the Schlüter-KERDI-TS complete set was adhered to the shower tray to create a sound waterproof connection between the tray, made of stone resin and the adjoining wall. This solution was particularly important as the two different components could potentially create a weak spot which would allow water ingress.

Further products from the Schlüter-KERDI waterproofing range were used, including the KERDI-200 membrane, Schlüter-KERDI-KEBA sealing band and Schlüter-KERDI-COLL sealing adhesive, supporting the overall protection of the bathroom. For functional and aesthetic purposes, a prefabricated Schlüter-KERDI-BOARD-N niche was installed. This was perfect for the client as they needed storage that was convenient whilst remaining stylish. In terms of installation, it was far from challenging as it was easily integrated into the Schlüter-KERDI waterproofing system as a bonded waterproofing assembly. Schlüter-DITRA-HEAT-DUO Peel & Stick was the answer when deciding what underfloor heating to install.

Andrew commented on how using this product reduced installation time; installing in just one hour compared to the typical installation time of up to a day. Not only does DITRA-

HEAT-DUO-PS offer advantages of a quick heat-up response and sound insulation, its peel and stick technology means time and material is saved when installing.

Another stand-out benefit of using DITRA-HEAT is the minimal height build-up of the membrane and cables, which is approximately 7.6mm. Ensuring build up is kept to a minimum is important when it comes to a renovation project, particularly when dealing with the sensitive restoration of a property like this one.

Once the room was waterproofed, 120 x 60 mm stone-effect porcelain tiles were fitted on the shower wall and behind the wash basin, with 120 x 20 mm wood-effect porcelain tiles on the floor. When Andrew and his team began the work, they quickly realised the main challenges were down to the age of the property, with typically unlevel walls and dated plumbing and electrics.

Ensuring this bathroom has a long lifespan and could meet the homeowners' needs was important to Andrew and his team, and they remarked how nothing was too much trouble for Schlüter's Area Sales Consultant, Stuart Gillson who was brilliant in offering support throughout the project.



Andrew also received additional support from the technical team at Schlüter-Systems to help deal with some of the intricacies of the project. It was clear that preserving the building's history through the installation of new system solutions, whilst creating a modern touch within this new bathroom, was a key focus for the homeowners in making this their long-term dream home. www.schluter.co.uk



This means you can locate them in a central position in the living space and enjoy them from anywhere in the room. Two and three-sided designer stoves are always in great demand, with panoramic fire views that bathe the home in a warm glow. These come in the shapes of the Dik Geurts Bora Corner and Vidar Triple. Both models offer multiple variations in size and configuration with ample log storage opportunities.

The past couple of years has seen a huge upsurge in sales of designer wood burning models, as consumers become more adventurous in their choice of home heating appliances. Contemporary wood stoves, with their ergonomic designs, high efficiency and low emissions, will remain a mainstay of home heating for many years to come. We expect even more exciting developments in these products in the future. For further information, email info@drufire.co.uk or visit: www.drufire.com

The Artistry Of Modern Wood Burning Stoves With Unconventional Designs

DRU UK general manager Niall Deiraniya heralds their latest generation of designer stoves.



Ever since wood burning stoves became an essential part of the home heating mix, designers and manufacturers have strived to produce models that will appeal to

aspirational homeowners. Dik Geurts, our primary wood burning brand, has been an innovator since the 1980s, developing stoves and fires that can capture the attention of discerning customers in busy fireplace showrooms.

In 2008, Dik Geurts introduced the Aruba, a spectacular elliptical stove that featured prominently in the BBC drama series Hustle. This has now been superseded by the Oval, which is available in freestanding, fixed and suspended versions with greatly improved performance and efficiency.

Its sales this year have surpassed all expectations. Odin, the circular equivalent of Oval, has proved equally popular, especially the Plateau model, which sits on a beautifully crafted log storage plinth for added visual appeal and practicality. Both Odin and Oval are available in single-sided or tunnel versions. .



Dural Bosses The Joint At Bicester Village

Dural are pleased to have been asked to provide flooring solutions for many high end retailers and fashion brands. Here we highlight a recent project for Hugo Boss, Bicester Designer Outlet. Bicester Village is a designer outlet centre situated on the outskirts of Bicester, a town in Oxfordshire. It opened in 1995 and has become hugely popular. Hugo Boss, the luxury fashion brand, selling clothing, accessories and footwear needed advice for their textured tiled floor in their new store opening at the designer outlet.

The beautiful high texture tiled floor was calculated to be approximately 300m². When considering such a large expanse of tile it is important to use movement joints. Hard flooring expands and contracts, a movement joint prevents the tiles and grout from cracking and deboning. Movement Joint Profiles can cope with heavy stresses and distribute them evenly between the foundation and floor covering.



They protect hard floor coverings from the stresses that cause cracking, tenting or popping and also prevent conduction of noise from footfall and other bodies. The Coloured Movement Joints were specified by tiling contractor C.Vaughan for this project in order to give the room a seamless, high end finish as expected by such a prestigious brand. In this instance C. Vaughan specified Powder Coated Mapei Anthracite.

Coloured movement joints are available in any RAL colour and here they match the tile colour. They are used in retail space because of their durability and ability to handle a wide range of loadings and constant footfall. All CMJ - Coloured Movement Joints are designed and manufactured to exceed the requirements of BS 5385 and can be used with Slate, Natural Stone and Ceramic tiled floors.

Dural also provides highly competent advice and support for any tiling project. No matter how complex the application they can provide the perfect solution, including both products and service. If you would like further information regarding Movement Joints or any other product range, please telephone their UK head office on 01924 360110. www.colouredmovementjoints.co.uk



Bare Beauty With The New Urban Nude Kitchen From Keller



Industrial kitchens are often designed in dark tones; yet the new Urban Nude kitchen from Keller introduces light shades such as sea salt, pictured here, from the trendy greige palette. It also highlights the beauty and versatility of glass units. Various new wood decors in ash tones have been introduced and designers can select from unicolour or wood décor melamine; for a more luxurious look, a lacquer colour and/or a stained veneer can be specified. Pictured here - the wine cooler is built into the back composite wall and is framed by sturdy fluted glass cabinets with LED lighting strips.

The nude “sea salt” and coffee oak fronts are accompanied by tall fluted glass units with matt black alu frame and knob. Also featured in this kitchen is the new base unit platform which combines 520mm and 260mm drawer lines offering new possibilities. Keller is well known for offering the widest range of colours (2,050 NCS) and finishes in the kitchen furniture market – along with a vast range of cabinet options, all produced by the most sustainable means possible. In addition, the company is proud to be a Carbon Neutral kitchen manufacturer since 2017 and is now on the way to becoming Carbon Negative. www.kellerkitchens.com

Sumptuous Steel For The Home



For a look of luxury, heritage, class and beauty, specifiers are increasingly using steel for different areas in the home choosing a Steel Window Association (SWA) member for quality assurance and technical guidance.

Generally, architects and homeowners are choosing steel screens, doors and windows as they allow natural light into a space; for example, in kitchens and living rooms, steel internal partitions will break up a space while windows maximise the light which can enter.

External steel windows can be amalgamated into extensions as a replacement for exterior walls. This is a perfect way to bring light into the home and create the illusion of a larger room, blending the indoors with the outside.

Steel windows come in a range of sizes allowing for the option of large glass panes spanning across the space of an external wall which will not obstruct the view of the garden.



To convert existing open plan areas to the new trend of broken plan design, and create separate spaces, the W20 steel profiles can be used as internal partitions bringing through the external design aesthetics to the internal space.

This can be a small partition to separate an area, or a large partition which can take the place of an interior non-weight bearing wall. Steel partitions complement various interior schemes from mid-century modern designs to Scandi-styles with black steel windows reflecting a striking contrast to pale cabinetry.

Not only are steel windows incredibly stylish, the strong W20 steel sections allow for double glazed windows with thermally efficient units so rooms can stay beautiful and warm. Other popular applications of steel windows, doors and screens include wine cellars, summer houses, shower screens and office/study zoning.

Members of the Steel Window Association offer a UK wide service for the repair and replacement of various types of old metal windows, doors and screens, as well as being able to manufacture new fenestration which fully meets building regulations.

Choosing an SWA member to manufacture and install your steel windows, doors and screens ensures that you are receiving the highest standard of fabrication, installation and customer service.
www.steel-window-association.co.uk





Make More of Herringbone With IVC Commercial

With a natural look and texture and a performance construction, Moduleo Roots 55 brings interiors closer to nature with a floor finish that's durable and easy to look after. Now, with Moduleo Roots Herringbone, projects can benefit from the quality and affordability of IVC Commercial's Belgian-made LVT floors in two dryback herringbone plank formats. Moduleo Roots 55 Herringbone is the ideal solution for housing developments and commercial offices wanting a herringbone look in a finish that needs to deliver a tough and easy to look after floor. Herringbone Classic (40.6 x 10.7cm) is a versatile plank that's ideal for housing projects, while Herringbone Short (63.2 x 15.8cm) stops large areas looking too busy.

Both sizes are available in a range of natural wood looks, matched to Moduleo Roots 55 standard planks. Selected designs are also available with EIR (embossed in register), where the texture mimics the wood grain pattern for improved realism. Every Moduleo floor is designed and made in-house, so that every aspect of its quality can be controlled. Moduleo luxury vinyl tiles feature up to 30% recycled content from production waste, processed in the industry's largest in-house PVC recycling facility. Using IVC Commercial's ReCover programme can also ensure that installation waste is recovered and recycled. www.ivc-commercial.com

F. Ball Makes For Top Story At Channel 4 News

F. Ball and Co. Ltd.'s Stopgap 300 smoothing compound has been used to create a hard-wearing base for a flooring installation at Channel 4 News' main broadcast studios in Leeds. The refurbishment involved installing luxury vinyl tiles (LVTs) over 120m² at the television broadcaster's national headquarters located on the south bank of the river in the city centre.

As well as delivering perfect aesthetics to pass the scrutiny of roaming HD cameras, the flooring had to be super smooth and durable to accommodate the repeated movement of the cameras and other heavy equipment. A site visit from F. Ball's Technical Service Department identified a subfloor consisting of a power-floated concrete base that had been subject to several flooring installations since the building was built 25 years prior. Multiple applications of smoothing compound, some of which had failed due to degradation, exposed a dense and shiny power floated concrete surface.

London-based contractors iFlor Flooring Contractors LLP commenced with F. Ball's recommendation to mechanically remove all layers of old smoothing compound and contaminants to create a suitably smooth, micro textured surface. The substrate was then primed with F. Ball's Stopgap P131 general purpose primer to prevent the unacceptably rapid drying of the subsequently applied smoothing compound. Once dry, Stopgap 300 smoothing compound was applied at a depth of 3mm over the entire subfloor to provide the firm, smooth base over which the floorcoverings could be installed. Stopgap 300 is walk on hard just 90 minutes after application, allowing for the LVT floorcoverings to be installed little more than three hours later. www.f-ball.co.uk



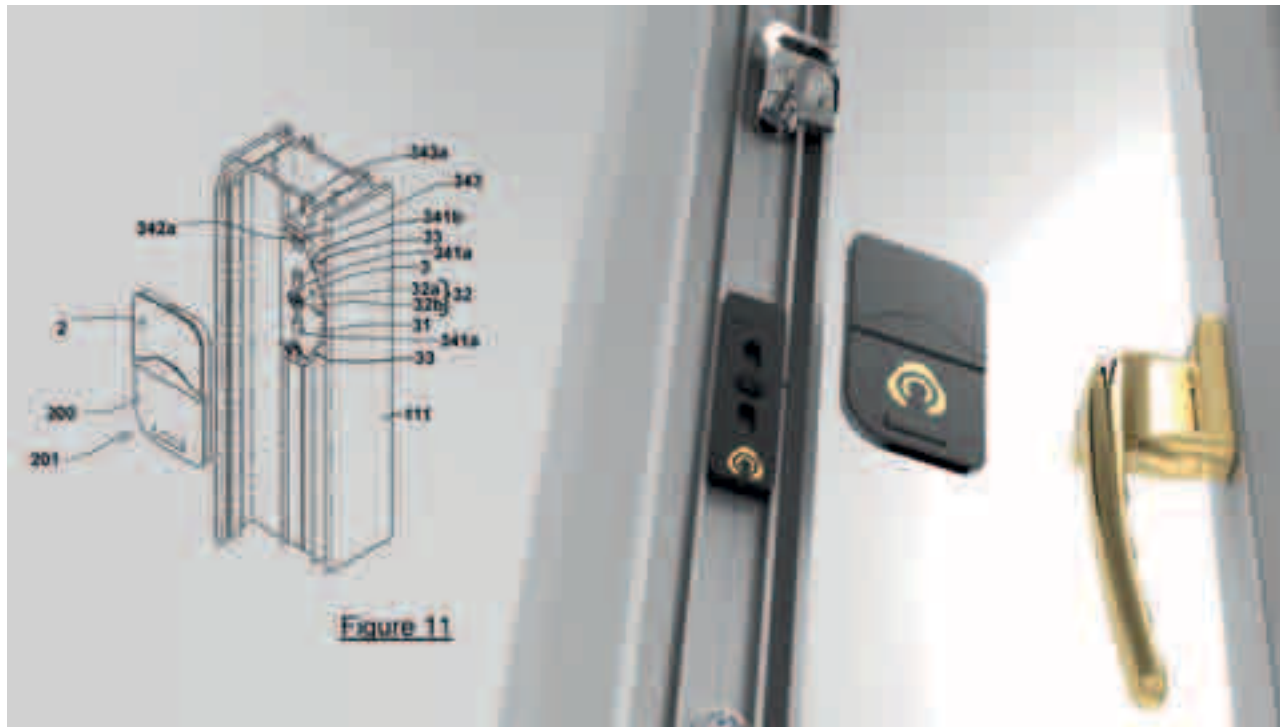
Kenilworth School Benefits From Fermacell® For Major Relocation Project

Following on from its relocation and merger into one all-purpose facility at the start of the academic year, Kenilworth School and Sixth Form is benefitting from the decision by

Glancy Nicholls Architects and contractor Morgan Sindall to specify specialist boarding for the ceilings and walls in its new sports hall. Part of a range of products by James Hardie, one of the world's leading manufacturers of building materials, fermacell® is a fibre gypsum board which provides superior fire resistance, acoustic performance and impact strength.

This high-density board simplified the design of the sports hall and created more space by narrowing the width of the walls. This not only helped with the speed of the build but also had a positive impact on carbon reduction as fermacell® is manufactured from recycled gypsum, water and wood fibres. The new sports hall is a major part of the new Kenilworth School & Sixth Form which is one of the largest schools constructed in the UK, with a three-story campus with 2,200 places on offer, a 25% increase, helping Kenilworth to cater for its growing population.

Chris Winwood, Commercial Sales Manager at James Hardie commented: "As well as impact resistance and fire performance the exceptional acoustic ratings of fermacell® means the sports hall can be used with complete confidence, and without disturbing other areas of the school. It has been extensively used in the Education sector, as it offers the robustness of blockwork with the speed and install of drywall, saving time, money and space making it ideal for modern school environments." www.fermacell.co.uk



Kubu Announces Another Milestone with Granted Patent for Clip-In Window Sensor Technology

In a significant move that underscores its commitment to innovation and industry leadership, Kubu is thrilled to announce the granting of another patent - this time for its pioneering Smart window sensors. The patent specifically covers the innovative fitment methods - developed by Kubu - that allow Window sensors to be clipped onto a mounting bracket within the air gap of a window frame, providing an easy to use and concealed fitment.

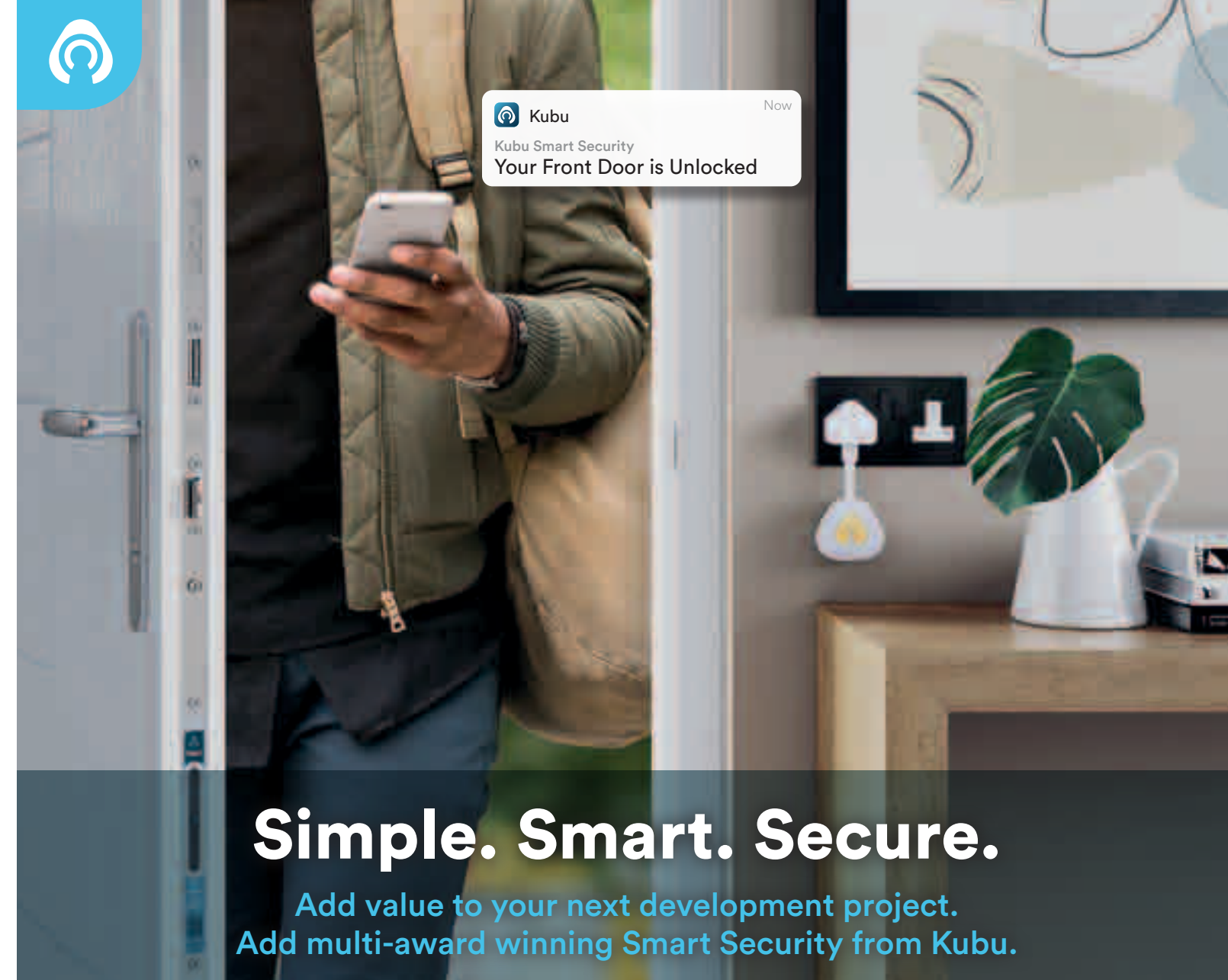
This new patent joins Kubu's growing portfolio of intellectual property, including the previously patented mechanism that allows a sensor to be integrated within a multi-point door lock, through the use of micro-switches on the gearbox and a custom sensor housing, accessed through a slot in the faceplate of the lock.

"Kubu's dedication to pushing the boundaries of smart security technology is evident in our continuous pursuit of patents that protect and validate our innovations," said Ryan Bromley, Co-founder of Kubu. "This latest patent not only reinforces our position at the forefront of the fenestration industry but also sends a clear message about the authenticity and originality of our products."

The announcement comes at a time when the market is seeing an increase in fenestration products that are designed to work with Smart technology, such as Kubu's patented security sensors. For Fenestration Industry Trade Professionals, the distinction between genuine innovation and mere imitation has never been more critical.

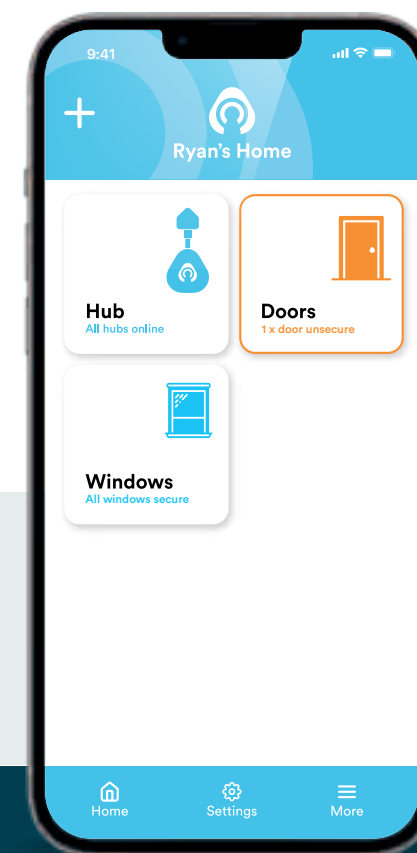
Marc Henson, Head of Marketing at Kubu, added, "Our team has worked tirelessly to develop technologies that truly make a difference. This patent is a testament to our dedication and another fantastic addition to our already extensive intellectual property portfolio." Kubu's message to industry professionals is clear: When it comes to smart security, it's essential to choose a brand that not only leads in innovation but also stands by the authenticity of its products.

With Kubu, professionals can be confident they're opting for genuine, fully-accredited, patented technology from a vertically integrated business that delivers on its promises. For more details on Kubu's patented technologies and the value they bring to the fenestration industry, visit getkubu.com, email trade@getkubu.com or call 0330 555 9545.



Simple. Smart. Secure.

Add value to your next development project.
Add multi-award winning Smart Security from Kubu.



Kubu is a multi-award winning range of high-security Smart sensors that fit seamlessly into your doors and windows, and integrates with other Smart Home devices to create a full perimeter alarm system that is simple to fit, and provides added value for the developer with virtually no additional cost.

To find out more about Kubu and how Smart Security can add value to your next project, visit: getkubu.com/trade or email: sales@getkubu.com

Be Sure It's Secure, with Kubu



A photograph of a modern interior space. The room features a large wall made of vertical wooden panels with thin vertical metal handles. Below this wall is a long, low wooden bench. The floor is covered in a blue and grey patterned carpet. In the foreground, there are several green armchairs. A small potted tree stands near a large window on the right side of the room, which offers a view of a cityscape.

XTRA 2023

Highlights of this issue's Xtra 2023 include:

Selecting the right architectural ironmongery can be a challenge; from the complex and multifaceted requirements of technical specification, to achieving functionality and durability that meet the needs of users within the built environment. STRAND HARDWARE outlines considerations to steer you to the right choice.

A bronze façade featuring integrated Rundum Meir garage doors for two new townhouses in central Manchester has been uniquely designed to reflect the architecture of the nearby John Rylands Library, one of the city's most famous neo-Gothic buildings.

Silestone® by Cosentino introduces its new series Urban Crush, a collection full of colour and design inspired by the heartbeat of the city and new urban trends.

A sophisticated and stunning choice of worktop for any kitchen décor, marble-inspired surfaces continue to be on-trend, with Palermo, the latest launch in the CRL Quartz range from CRL Stone being no exception.

High Five for Strand Hardware

Selecting the right architectural ironmongery can be a challenge; from the complex and multifaceted requirements of technical specification, to achieving functionality and durability that meet the needs of users within the built environment. STRAND HARDWARE outlines considerations to steer you to the right choice.

It's a tough ask: the complexity of selecting the right architectural ironmongery is a process of navigation. There are a range of factors: diverse and seemingly limitless products and variations, project-specific requirements, regulatory compliance, design integration, budget constraints, technological advancements, reliability, and sustainability considerations. Professionals must face these issues, understanding what's needed to make well-informed decisions which align themselves against the wider ambitions of the project.

The sheer scope of the process can be overwhelming. It is increasingly difficult to compare 'similar products' only to find that they are as different as oranges and apples. Seemingly similar products can vary significantly in quality, durability and cost and therefore it's essential to consider what's important when preparing your 'shopping list'. That being said, there are some things that should never be compromised, safety and security especially – always check that your selected products have been fully tested and meet safety standards.



Fit and functionality is also key – finding quality fittings may stretch your budget, especially if they are being purchased towards the end of an expensive development process, but choosing wisely can save money in the long-term and support the overall design aesthetic. Finding a reliable partner is all important. Working with a trusted supplier is essential because asking the right questions will save you time and direct you to the right solutions.

Strand Hardware places great emphasis on its in-house expertise – meaning help is always just a phone call away. Whether you have purchased directly from Strand, or via one of its carefully-selected architectural ironmongers, Strand will provide you with advice and guidance to make an informed purchase and technical support on installation. When it comes to products that you can trust, you need look no further than Strand Hardware. As a manufacturer and distributor of specialist architectural ironmongery, its



reputation has been built on product quality and durability, alongside outstanding customer service. Strand has many different products across five key ranges: door and windows, emergency exit and panic hardware, window control systems, Glass Central and D-Fine. These incorporate a variety of product types including finger

protection, window openers, glass patch fittings and panic hardware made from grade 316 stainless steel. Although finding the right product to meet functionality, compatibility and suitability for different environs can a difficult task, Strand's team of experts make this easy. They are on hand to assist with specification queries and if standard products don't fit the bill, many can be produced in bespoke lengths and finishes.

All Strand's products – including those for which it has exclusive UK and Ireland distribution such as Athmer, and Anti-Panic – are featured on www.strandhardware.co.uk It also publishes colour-coded catalogues to provide desk resource for architects, designers, and industry professionals. Among its window and door hardware, is an extensive range of finger protection. These include best-selling FP200 – so good that it comes with a lifetime guarantee (subject to terms and conditions)!

There are products to suit most doors: manual and automatic, external and internal, single and double action, including those made from different materials; timber, aluminium, PVC-u or glass. Also included within this parent group, is the Strand Duoflex brand of adjustable folding openers for timber, aluminium, steel and PVCu top hung, outward opening windows.



Manufactured in the Midlands by Strand Hardware, they carry the Made In Britain mark, and are available for recessed, flush and stepped profiles, together with a range of accessories.

Strand Hardware is well known for its emergency exit hardware which provides escape devices that combine ease of operation, simplicity of fixing and aesthetic appearance. These come in modular push bar and touch bar options – manual and motorised – together with a range of accompanying products such as outside access devices, strikes and accessories for motorised touch bars.

All Strand emergency exit and panic hardware products have been rigorously tested and are UKCA and CE marked. Strand Hardware Window control products are included within its window control systems range. These offer manual and electrically operated natural ventilation solutions which can improve air quality and address potential health and safety risks to better operated high-level or hard to reach windows. (cont...)



(cont...) Its manual system consists of an opener, fitted to a vent which is linked via lengths of conduit and cable to a wall-mounted operator. It's a flexible system, as the conduit can be bent around obstructions, with its operating handle positioned at an easily accessible location. There is also an electronic system for a more advanced solution.

Glass Central is Strand's range of patch fittings for toughened glass walls and doors. This product range has a 'clear advantage' and can be used to divide open plan workspaces, providing much-needed privacy space, while maintaining the benefit of natural light sources lost when using other materials to create room separation. Glass Central includes locks, latches, pivots, strike boxes, floor springs, tracks and hinges.

The D-Fine range of panic exit devices is constructed out of grade 316 stainless steel. This guarantees maximum functionality and a long lifetime even under the most extreme weather and atmospheric conditions. They are regularly used on coastal buildings, in leisure buildings with swimming pools or environments that suffer extreme weather conditions such as oil rigs. The range incorporates a variety of push and touch bars – one, two and three point bolt and latch products – and outside access devices.

Grade 316 stainless steel is well-established as a corrosion resistant material and all items within the D-Fine range are salt spray tested to 800 hours. Catalogues featuring each of the ranges can be found in the 'Literature' section of the Strand Hardware website together with fitting instructions and declarations of performance.

For more information please call the Strand technical sales team on: 01922 639111 or email: info@strandhardware.co.uk

Strand's tips to help you hone down your choice.

- **Diverse Product Range:** The sheer diversity of options available in the market can be overwhelming. Professionals need to consider various factors such as functionality, aesthetics, and compatibility with existing structures.
- **Project-Specific Requirements:** Different projects will have unique requirements based on factors such as building type, usage patterns, security needs, and design preferences. Identifying and aligning the needs of a project with the right solutions requires a nuanced understanding of both the project itself and the capabilities of available products.
- **Compliance and Regulations:** Building regulations, and standards play a crucial role in the selection of architectural ironmongery. Professionals need to ensure that the chosen hardware meets safety, accessibility, and security standards.
- **Design Integration:** Architectural ironmongery is not just about functionality; it also contributes significantly to the overall design aesthetics of a space. Selecting hardware that complements the architectural style and design intent of a project is essential. Achieving a harmonious integration while meeting functional requirements can be a delicate balance.
- **Budget Constraints:** Cost considerations are always a factor in any construction project. Balancing the need for high-quality ironmongery that meets project requirements with budget constraints requires careful evaluation. Cheaper options may compromise on quality and safety.
- **Technological Advancements:** Architectural ironmongery is constantly evolving. Professionals need to stay updated on the latest innovations and trends to make informed decisions.
- **Reliability:** Choosing a reliable and reputable supplier is crucial for obtaining high-quality architectural ironmongery. The market is flooded with various suppliers, and ensuring consistency in product quality, delivery timelines, and after-sales support requires thorough vetting.
- **Sustainability Considerations:** With the increasing focus on sustainability, professionals are now expected to consider the environmental impact of the materials and manufacturing processes used - evaluating the sustainability credentials and outcomes of products.

QUALITY

LOVE STRAND

Quality matters. That's why we only stock the best – well engineered, durable products on which you can rely.

We ensure that all our ranges undergo rigorous testing and meet British and European safety standards.

When you buy through Strand Hardware, you can be sure of quality.

#LoveStrand



LinkedIn

Twitter

01922 639 111

info@strandhardware.co.uk

Rundum Meir Façade Doors Uniquely Reflect Manchester Landmark's Heritage

A bronze façade featuring integrated Rundum Meir garage doors for two new townhouses in central Manchester has been uniquely designed to reflect the architecture of the nearby John Rylands Library, one of the city's most famous neo-Gothic buildings.

The duo of four storey, high specification private dwellings designed by Snook Architects for regeneration specialist Watch This Space have given new purpose to an unused site nestling between two post-industrial buildings close to Deansgate. Their full height bronze façade delivers a striking external appearance that takes a distinctive visual cue from the library, located opposite.

The houses are designed around an inverted living approach, enabling the architects to maximise the footprint of the site and use the space to its full potential. Above the garages are floors accommodating the bedrooms, with the living, dining and kitchen areas on the upper floors, and a rooftop courtyard/garden completing the arrangement.

Photos © Andrew Haslam Photography
(andyhaslam.com)



The aluminium façade of both townhouses features laser cut and acid-etched lacy blind tracery patterns that match those in the windows of the library, a late Victorian neo-Gothic building which opened in 1900 and is now part of the University of Manchester. The lacy pattern extends over the full height of the façade which includes large folding/sliding shutters.

These balance privacy with natural light requirements for residents during the day whilst being eye-catching at night as internal light shines through the laser cut pattern. This design extends into the twin side sliding sectional garage doors manufactured and installed by Rundum Meir, which effectively deliver a sliding façade at street level.

Working closely with architect Neil Dawson, Rundum Meir's designers were able to replicate the design with total consistency and manufacture in Germany using acid etching across the six aluminium sections. Neil Dawson of Snook Architects said: "Watch This Space approached us to look at how they could transform this city centre

site and we immediately saw the potential to take design inspiration from the nearby John Rylands Library. The resulting façade is unique, and through the movement of the shutters and garage doors during daily life it is constantly moving and changing."

"The laser cut pattern means that the building really comes to life at night as the internal light makes the intricate façade design a stunning feature. To be able to match this styling in the garage doors was crucially important and the result reflects the bespoke craftsmanship provided by Rundum Meir." The twin Rundum Meir sliding garage doors each provide a clear opening of 3.8 m for easy vehicle access from the street.

Hand made using extruded aluminium, the fully automated bespoke garage doors have an automated pedestrian door as well as the side sliding door that demonstrate the design flexibility offered by Rundum Meir, who create every garage door to meet project requirements. www.rundum.co.uk





Silestone® Introduces New Urban Crush Collection

Silestone® by Cosentino introduces its new series Urban Crush, a collection full of colour and design inspired by the heartbeat of the city and new urban trends. Lime Delight, Concrete Pulse, Brass Relish and Cinder Craze make up this collection of dusty tones that creates an ideal industrial backdrop, the perfect partner for raw and eclectic spaces.

Urban Crush is produced with HybriQ+® technology, which uses a more sustainable manufacturing process with 99% recycled water, 100% electric energy from renewable sources and a minimum of 20% recycled materials in its composition. (cont...)





(cont...) Two years since its last release, Silestone® by Cosentino, the world's leading hybrid mineral surface for architecture and design, returns stronger than ever to present its new collection: Urban Crush. A commitment to elegance, colour and innovation, the new collection has been designed to suit new urban spaces with its modern, vibrant aesthetics. Contemporary and understated, Urban Crush introduces dusty tones to create an ideal industrial backdrop; a natural complement for raw, eclectic spaces.



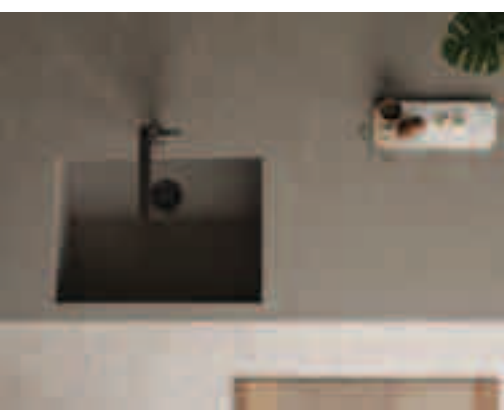
When you look closer, the Urban Crush designs burst with intensity, breathing life into spaces. Recreating the look of limestone and sandstone, the stylish collection comprises four colourways - Lime Delight, Concrete Pulse, Brass Relish and Cinder Craze - inspired by the textures of the city.

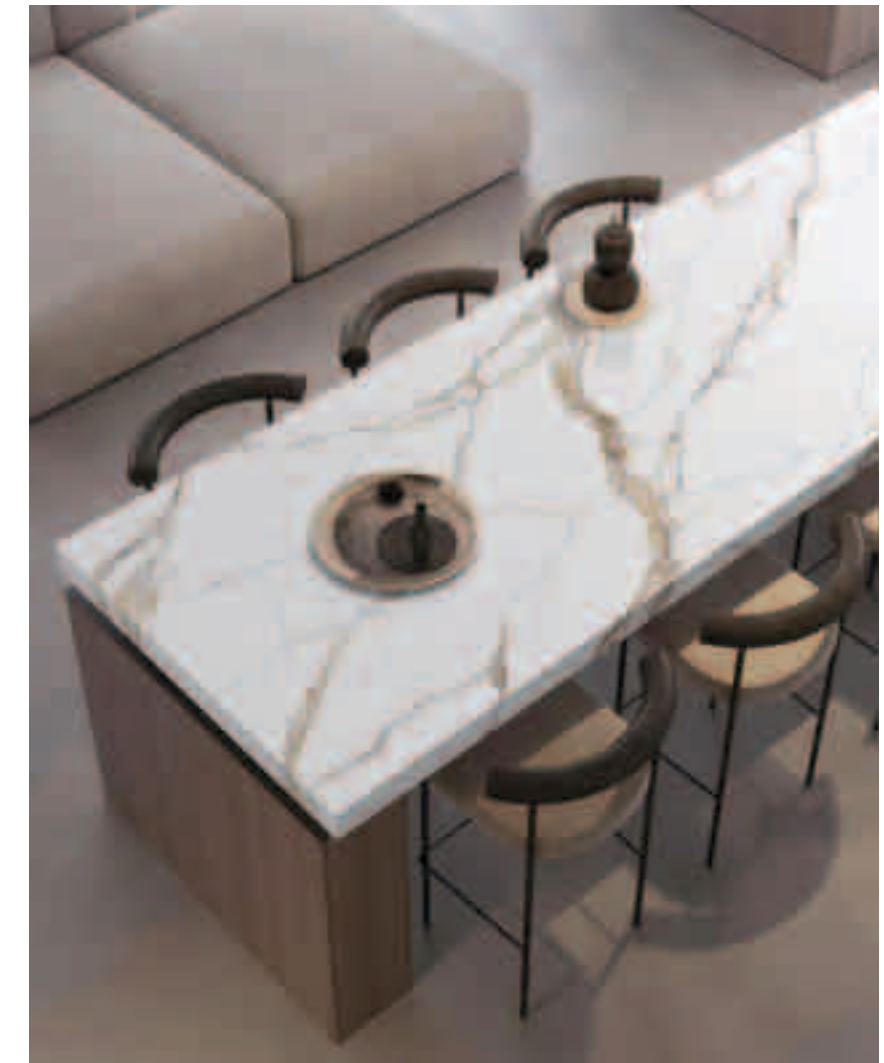
Lime Delight: The textured beige tones of Lime Delight provide a versatile base for any interior, from calm and minimal spaces to unexpected, bold looks. Warm and bright, it replicates the beauty and luminosity of the renowned Marbella limestone.

Concrete Pulse: Cool and refined, Concrete Pulse is ideal for eclectic interiors, helping to create a vibrant show of contrasts. Its natural raw grey tone brings the effects of light and shadow play to any setting.

Brass Relish: The grainy brown of Brass Relish blends seamlessly with the colours and design elements of modern vintage style. This sophisticated elegant colourway embodies finely grained sandstone.

Cinder Craze: A modern reinterpretation of black sandstone, Cinder Craze brings style and personality to industrial-inspired interiors with its dark and dramatic tone.
www.cosentino.com/en-gb/silestone





Bold Design Takes On A Dramatic Effect With Palermo

A sophisticated and stunning choice of worktop for any kitchen décor, marble- inspired surfaces continue to be on-trend, with Palermo, the latest launch in the CRL Quartz range from CRL Stone being no exception. Opulence and luxury in interior design is defined with Palermo. A crisp white background is the perfect setting for bold, veining that adds instant character and eye-catching detail to any setting. Inspired by nature, the quartz surface elevates any interior into a fresh, sophisticated space. Bookmatch options are also available, to create the glorious look of marble in large spaces.

This CRL Quartz surface features dramatic patterning, inspired by stones found in nature, designed with modern trends and modern lifestyles in mind. CRL Quartz is an ideal material for use in any setting, including kitchens and bathrooms. Highly resistant to knocks and impacts, it is heat, scratch and stain resistant, and no extra care or special products are needed to clean it.

Stains can be removed with water or mild cleaning products and, because it is a non-porous surface, the build-up of bacteria or mould is prevented, making it hygienic and easy to maintain. As such, CRL Quartz Palermo is the ideal way to offer consumers the durability and style they are looking for from a worktop. For more information call CRL Stone on 01706 863 600 or visit www.crlstone.co.uk



Industrial Loft Doors From Hörmann UK Glass And Steel In Perfect Harmony



Combining large, glazed panels with high quality slim steel profiles, industrial loft style doors from Hörmann UK offer specifiers and consumers endless opportunities to create modern doors and room screening for a feeling of space and light. The loft door range is an internal glazed door system which has been developed in response to the growing trend for slimline, heritage-style doors and screening in the interior design market.

The range will be exhibited for the first time in the UK on the Hörmann stand during the FIT Show - Stand no. P21, Hall 9, 23rd-25th May. The loft doors can be designed as single or double leaf options and can be either hinged or sliding. The addition of side elements and transoms means that large opening spaces can be created to provide an unobstructive view between living areas.

Glazing is available in either Clear or Clear white, with the steel profiles supplied in RAL 9005 Jet black matt as standard, five preferred colours including Traffic white and Anthracite grey or RAL colours of choice.



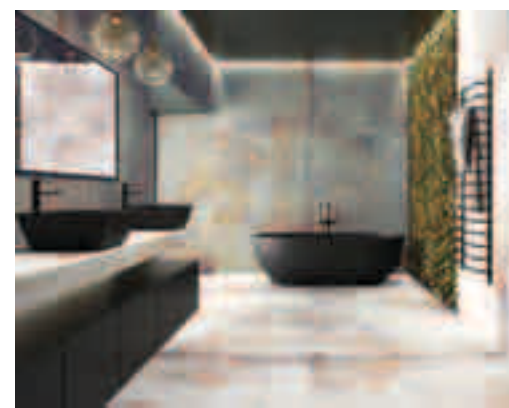
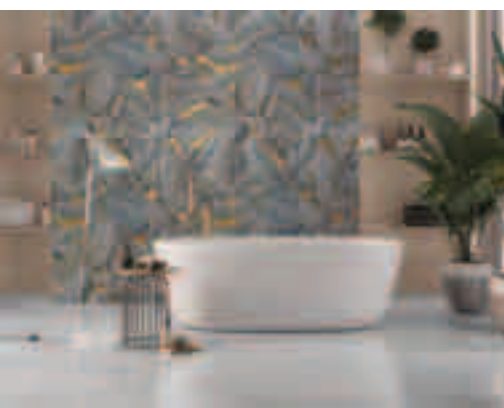
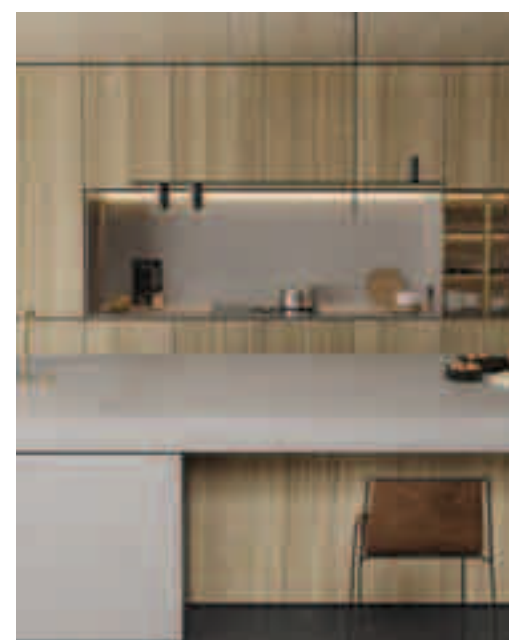
Textured and pearl-effect finishes together with the addition of handles and fittings from the Hörmann black.edition provides further opportunity for creativity and style. David O'Mara, Marketing Manager at Hörmann UK comments, "Our loft door system is the ideal product for creating bespoke interior glazed doors, partitions and dividers. This all culminates in helping to separate living spaces whilst maintaining optimum levels of natural light."

Whilst particularly suited for domestic properties the system can also be used in commercial situations such as entrances, offices and studios. Hörmann can now offer the market an interior glazed door system which combines creativity and flexibility with the Hörmann guarantee of quality." www.hormann.co.uk

Tile of Spain – Tile Trends from Cevisma 2023



After a two year hiatus, the Cevisma tile fair in Valencia returned with a flourish in 2023 and with 436 exhibitors. Exciting new designs, innovative technologies, inventive formats and inspiring trends were all present at a buzzing show that welcomed 74,115 visitors (25% from outside Spain). Exhibitors, organisers and attendees alike proclaimed the event a significant success. From decorative drama to subtle elegance, from the latest metallic effects to the sophistication of luxe stone looks, the tiles on display had something for everyone. Colour trends ranged from vibrant yellows to pastel pinks and from serene sea greens to beautiful blues.



Pattern was vividly present, either with an ultramodern edge or as a contemporary homage to traditional fabrics and wallpapers. Linear looks were strikingly directional as were volumetric reliefs. A cautiously optimistic mood from the industry looked forward to overcoming the issues from the fuel crisis to the pandemic to supply chain challenges.

Expectations were that a return to growth would be fuelled in part by applying the creative energy so typical of the Spanish tile industry and also by adapting to evolving markets. Furthermore, sustainability remains a core ethos for Spanish manufacturers, combining high-tech solutions with enduring and reliable quality.



Tile of Spain is the voice of the Spanish tile industry, encompassing more than 120 tile manufacturers. Renowned worldwide for an inspiring blend of aesthetic and technical innovation, Spanish tiles draw on a rich heritage of skill and creativity, while remaining at the cutting edge of design.

Manufactured in Spain and widely available in the UK, these products embody the spirit of an industry that prides itself on proposing beautiful, meaningful and high-performance solutions to flooring, wall coverings, furnishing and external paving and cladding. For further information on Tile of Spain: www.tileofspain.com



Iconic Stonehaven Lido Gets Mapei Waterproofing Treatment

A Mapei Polyurea waterproofing system has been used to restore the historic Stonehaven Open Air Pool in Aberdeenshire. Applied by Anderson Specialist Contracting, the project forms part of renovation works carried out by Aberdeenshire Council. A polyurea waterproofing membrane with excellent chemical resistance, exceptional flexibility and tear strength, Mapei Purtop 1000 N is designed to waterproof structures above and below ground, including roofs, podiums, pools and storage tanks.

Mapei was pleased to support Fairhurst Engineers as they explored specification options to establish the right product fit for such a prestigious project. Opened in 1934, Stonehaven Open Air Pool is the UK's only art deco Olympic-sized heated sea water

lido. During the Second World War, it provided recreation for locally-based troops and, afterwards, it once again proved a major visitor attraction. Threat of closure in the 1990s prompted the founding of a community group - The Friends of Stonehaven Open Air Pool - which is now a Scottish Charitable Incorporated Organisation (SCIO) that works in close partnership with Aberdeenshire Council.

Alongside Council funding to carry out extensive improvements, 2,000 hours of volunteer work were carried out post-pandemic to repaint and improve the Listed attraction, with £50,000 raised by The Friends to fund a new slide.



Although regularly maintained and repaired, the lido's multi-layered concrete and paint surface was in need of renovation. With its extensive expertise in pool waterproofing, Mapei was first approached in 2015 and recommended its Mapelastic Smart system overlaid with a finish. Last summer, Mapei was asked for further advice, as the client was now seeking a seamless solution.

With an in depth understanding of previous works carried out - and after discussions with the engineers, and careful consideration of the pool's age, exposed location and position - Mapei recommended specification of Purtop 1000 N - a two-component pure polyurea membrane which forms a completely waterproof coating, with high chemical resistance, exceptional flexibility and tear strength.

Mapei's proposal covered all aspects of the pool refurbishment, from repairs of the defective concrete using products from the Mapei concrete repair range, through to the Purtop 1000 N system build-up required for the lido. Throughout the project, Mapei

worked closely with Anderson Specialist Contracting and the client, making regular site visits. During the renovation, a tent was erected over the pool to allow works to continue unhindered: Existing coats of paint were removed, and the concrete substrate was inspected and tested, with the proposal amended to take into account the test results.

Defects were repaired and cracks were filled and injected with water-stopping resin. All joints and cracks were then bandaged with Mapeband Flex Roll tape. The substrate was then primed with Mapecoat I 600 W epoxy-resin based sealer and two layers of Triblock P epoxy-cement which created a damp proof membrane to hold back any moisture within the concrete.

Following a further coat of epoxy primer, Primer SN, the surface was cast with aggregate. Purtop 1000 N was then spray applied across the 1200m2 pool surface, followed by two coats of Mapecoat PU 20 N coloured aliphatic polyurethane topcoat and pool lines were painted. www.mapei.co.uk

Aspiring To Excellence With Soprema



Soprema's industry knowledge, experience and product diversity provides a full building envelope solution for a new, cutting-edge student accommodation development.

The Spireworks, located at 163 Cowley Road in Oxford, is a new student accommodation building that has used innovative construction techniques and materials. With a value of £21 million, the project was completed by main contractor, the RG Group, and student accommodation provider, Aparto. Architects, ICA, developed a design which would complement the buildings' surroundings, situated within a vibrant and eclectic arterial route in the city of Oxford, with the provision of retail and service facilities for the local community.

In addition to 137 student bedrooms, the new development delivers various common areas such as a gym, TV and games room, study spaces, laundry and communal kitchen. Outdoor amenity space was also integrated into the design across multiple levels via a courtyard plan arrangement, providing students with an active but intimate environment in which to sit and interact. A focus on high-quality materials and innovative installation techniques was a key focus of the design. One of the most significant elements of the Spireworks project was the roofing and cladding section, which was undertaken by specialist contractors, Roofworx.

Matthew Coupe, Managing Director at Roofworx (UK) Ltd, said: "The roofing and cladding element of this project was very complicated with numerous difficult interfaces. We were able to get involved early in the design stages which was fundamental to getting such a complex project over the line."



"We worked collaboratively with ICA Architects, taking their initial designs and working them through to product specification. We utilised a range of high-quality products from Soprema for the roof section, as we knew the leading manufacturer would deliver not only in terms of product reliability, but would be backed by a strong and knowledgeable in-house technical team, as well as system warranties." Overall, a total of 1,200m² of Soprema product was specified and installed for the project.

This included 450m² of Soprema's SOPRATORCH bituminous membrane multi-layer system, with SOPRATHERM tapered scheme to levels one, two and four of the building. In addition, the main roof consisted of 720m² of Soprema's DUOFLEX hot melt system with 200mm SOPRA XPS insulation and 56mm cement board upstands, as well as 50m² of Soprema's FLAGON single ply solution to all canopies and lift-over runs with edge trims and drips. (cont...)



(cont...) The new-build accommodation was constructed in two halves; therefore, an accurate sequence of work was imperative to the success of the project. Continued Matthew: "The project presented challenges before work even began, as we knew it was being built in two halves and due to circumstances out of our control, we could only actually start work on site two months behind schedule. The weather also presented obstacles as we had extremely wet, winter conditions to contend with."

"To ensure the programme of works wasn't further delayed and, in order to hit our deadline, we specified a unique product from Soprema - SOPRADVANCE concrete compound, which meant we could apply it to the concrete after just seven days, rather than the industry standard of a 28-day curing period. This unique product from Soprema reduced time on site without causing any further delays, which meant the project completed on time."

The works were undertaken during COVID-19 restrictions, which presented additional challenges as there were isolation requirements in place that had a knock-on effect to available labour. The location of the build also presented issues, as the narrow streets meant material deliveries had to be made exactly on time within allocated slots to ensure no obstructions to the roads, and so the build could progress to programme timescales.



Matthew continued: "We were very well supported by Soprema, who has its own in-house QA procedure to ensure all aspects of the waterproofing were well documented. Every stage of the build-up was captured, and the workmanship scrutinised by the field technicians so we could achieve an uncompromised finish." All operatives were given full Soprema system training by the company's in-house technical training team, as well as site inspections and support throughout the project.

The combination of Roofworx's expertise and the high-quality products from Soprema made the Spireworks project a considerable success, as despite initial delays, the project finished on time and within budget. Positive feedback from the client on workmanship and product selection from Soprema, as well as the invaluable technical support and guidance from the leading manufacturer, meant the building is now set to provide comfortable and safe accommodation for students in the heart of Oxford for many years to come. www.soprema.co.uk



Acoustics Help Eating In Comfort

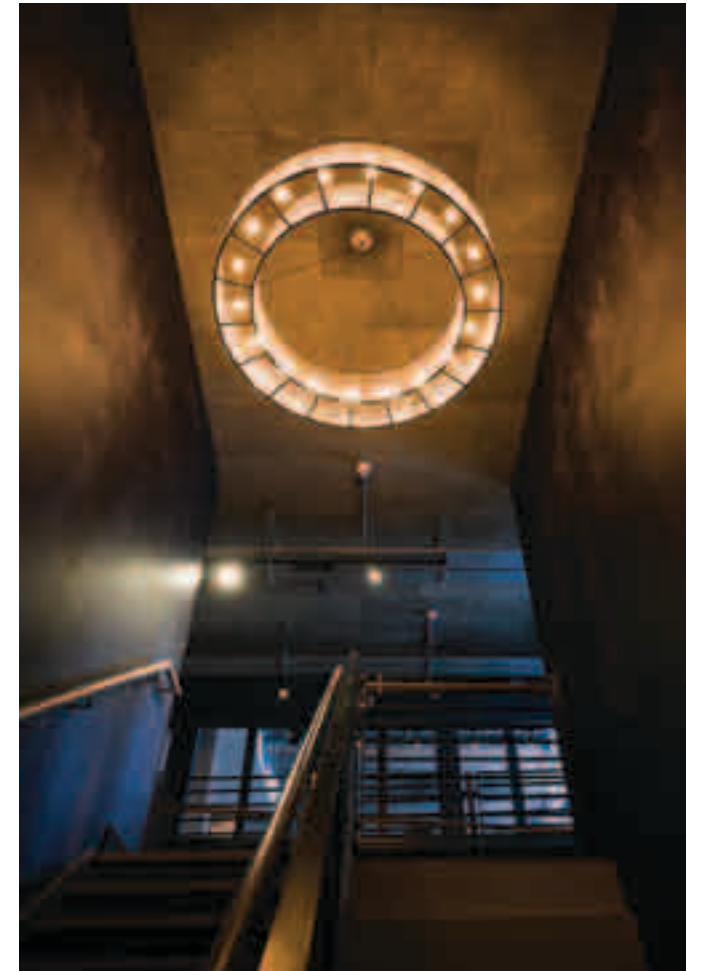
By their very nature of being large, open spaces with many hard surfaces, ambient noise levels in bars and restaurants tends to be high. This inevitably leads to customers talking louder to be heard and so begins a perpetual cycle of increased noise levels as everyone starts to have increasingly louder conversations. This, coupled with noise from music, kitchen machinery and HVAC services, can easily ruin the experience.

To help combat the problems of reverberating sound, designers frequently specify acoustic ceilings to help to strike a balance between a lively and welcoming environment and an experience where the space is uncomfortably loud. This is important because customers' comfort and a willingness to spend time and money is decreased in a noisy environment.

A good example of this is the Chamberlain Hotel in London where sustainable and ethical designers Sibley Grove have used Trolldtekt acoustic panels to counterpoint the reverberating noise reflecting from the stripped-back architecture with its exposed structural columns, ductwork and concrete surfaces. Trolldtekt acoustic panels are a perfect solution for this type of venue either as part of a suspended ceiling or individual 'acoustic clouds'.

They are available in a variety of different surfaces and colours and combine sound absorption with a tactile surface. With an expected life cycle of at least 50 years and resistance to humidity and impact, they are available in various sizes and four grades, from extreme fine to coarse. The panels can be left untreated or painted in almost any RAL colour. Depending on the panel specified, reaction to fire is classed in accordance with EN 13501 as B-s1,d0 or A2-s1,d0 respectively.

Founded on the Cradle-to-Cradle design concept and having attained Gold certification, Trolldtekt wood wool acoustic panels are manufactured using wood from certified forests (PEFC™ and FSC® C115450) and can contribute positively to a buildings BREEAM, DGNB or LEED points. More information on how acoustics can provide solutions for hospitality areas can be found at <https://www.trolldtekt.com/references/hotel-restaurant> while samples and technical guidance is available from www.trolldtekt.com





The Revo.PRIME is environmentally friendly as well, the operator saves up to 30 per cent in energy compared with its predecessor models which is achieved through the drive unit's reduced power consumption. Another benefit of the Revo.PRIME is its improved running performance. The brushless direct current motor (BLDC) with 1,000 Nm torque and the enlarged diameter of the door system, up to 3,800mm, ensures ease of access and meets the demands of today's architects and designers.

Available in 3 or 4 leaf versions and in a choice of gold, silver and black the Revo.PRIME can be networked to building automation systems via BACnet. Andy Howland, Sales and Marketing Director of GEZE UK, said "The Revo.PRIME is an impressive edition to our range of automatic operators and one that is sure to delight architects and specifiers giving them the freedom to design stunning entrances."

To find out more about the Revo.PRIME visit the dedicated Revo.PRIME microsite, see it in action on YouTube or email info.uk@geze.com. For more information about GEZE UK's comprehensive range of automatic and manual door closers visit www.geze.co.uk

Turn A New Leaf

GEZE has launched Revo.PRIME a new premium solution for revolving doors. The new operator boasts an exceptionally low canopy height, narrow profile systems and an improved running performance. Providing maximum transparency the Revo.PRIME is perfect for creating beautiful entrances and is especially suited for hotels and offices or any building where a statement entrance is required. With its class leading canopy height of just 75mm which houses the automation it ensures the minimal aesthetic whilst achieving excellent technical functionality. In addition the narrow profiles of just 60mm on the door leaf and side panel create a visually appealing entrance and increased transparency creating a light and airy entrance.

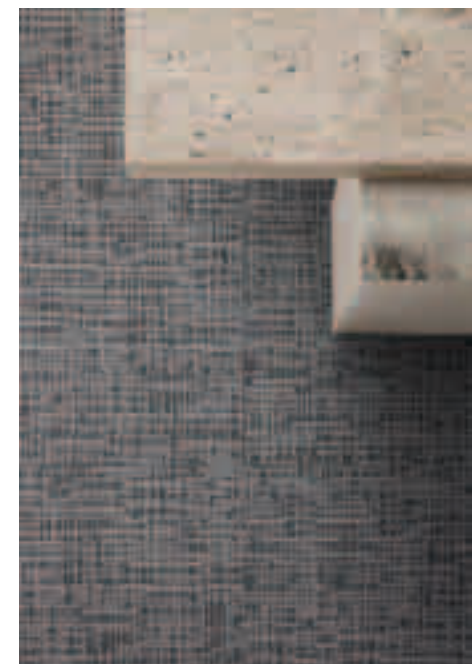
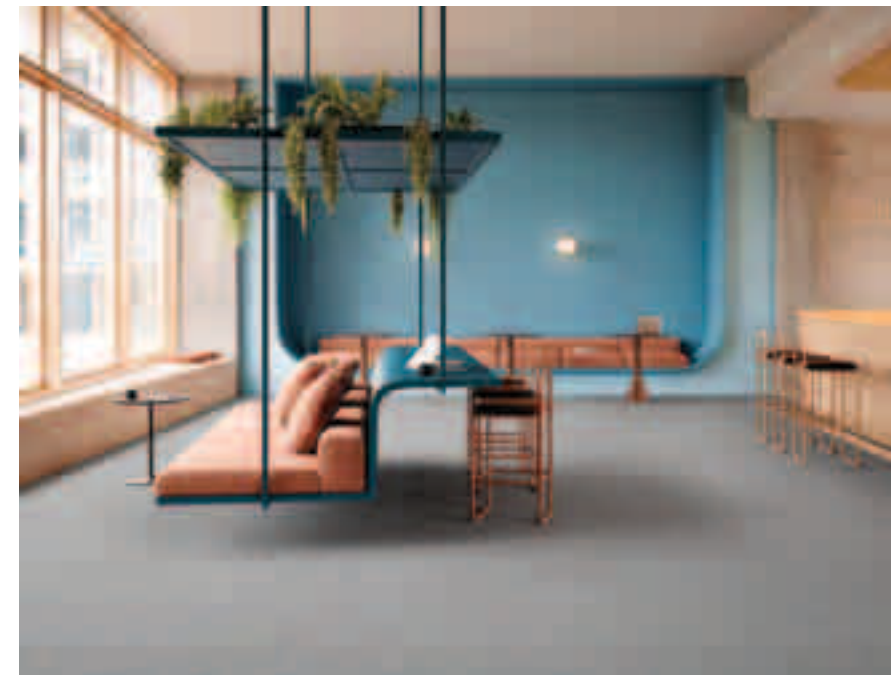




Express The Individuality Of Working Personalities With Pattern From IVC Commercial Carpet Tiles

Made with the world's first carbon negative yarn, Pattern is the brand-new carpet tile collection from IVC Commercial that responds to today's agile spaces.

As talent retention and wellbeing becomes the priority for corporations, modern office design needs to embrace different ways of working and being together, and Pattern helps the floor to play its role. The three designs of Pattern explore our relationship with working to create a collection that can flex across the modern office. (cont...)





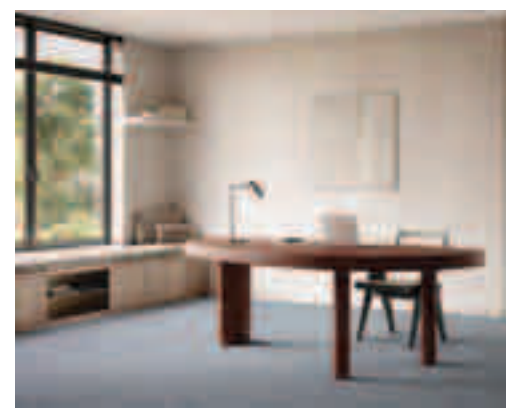
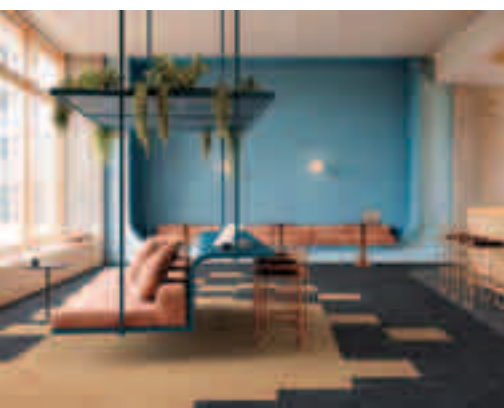
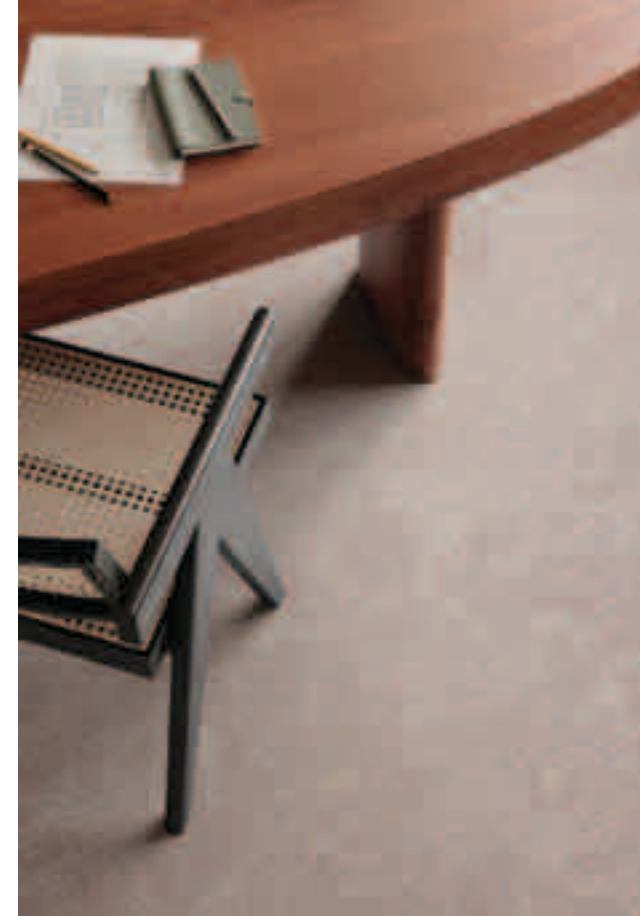
(cont...) Balanced has a strong sense of routine and rhythm for areas of rules and boundaries. The settled and structured look reflects a personality that seeks order in their working life, and this makes the design ideal for use in desking and boardroom areas. Contrastingly, Tailored is inspired by the self-control of those who are adept at switching between task and collaboration. Its structure flows more freely and breaks at random to give a look that's suited to spaces embracing today's many different ways of working. As the opposite to Balanced's restrained outlook, Unchained references expressive personalities that put freedom before all else. Its structure roams freely from one place to the next and is the perfect carpet tile for areas driven by creativity.



Jeroom Van Lindt, product manager, IVC Commercial Carpet Tiles, explores how the collection might be used in today's offices: "We were driven to create Pattern by a desire to reflect the multi-faceted modern office. No longer are these spaces geared solely to productivity, there about creating an environment that's inclusive and supportive, no matter how you like to work or collaborate to get the job done. It's the many styles of working persona that offices must accommodate which have inspired our three designs. Structure, balance and freedom are all important themes within modern working environments and Pattern lets you translate this into the zones you create with subtle reference."

"Within one office you could use Balanced for desking areas, Tailored in collaboration spaces and Unchained in areas focused on creativity. Alternatively, characterise the company through its carpet tile – Balanced in a financial institution, Tailored in a tech firm and Unchained in a media agency. Pattern is a really agile and adaptable collection."

Each design is available in the same palette of 16 colours. The soft and sophisticated options bring calm and grace and suit all three personalities beautifully. Among tone-on-tone greys, blues and warm neutrals, there's a colour suitable for any modern office. Every Pattern carpet tile is made with the world's first carbon negative yarn, made with the world's lightest production footprint from 90% recycled content. Samples are now available from IVC Commercial's London Showroom, The Gallery Clerkenwell. www.ivc-commercial.com



Interior Doors – Make The White Choice!

Selecting the right internal door for your interiors project, has always been important. Whether from a practical, design or budgetary perspective, interior doors are integral to well-designed living spaces, providing space functionality and reflecting general ambience and mood within rooms.

Although we live in a world where colour pervades, sometimes simplicity in design can often be the secret to creating timeless appeal. One way to achieve purity within your decor, is with the use of flush white doors. White, with its inherent ability to rejuvenate and add a fresh clean look to modern interiors is widely recognised, however it does not mean that scope for differentiation is limited. T

he White Collection by Vicaima, demonstrates that taking this singular tonal path can also open up a whole new world of possibilities.

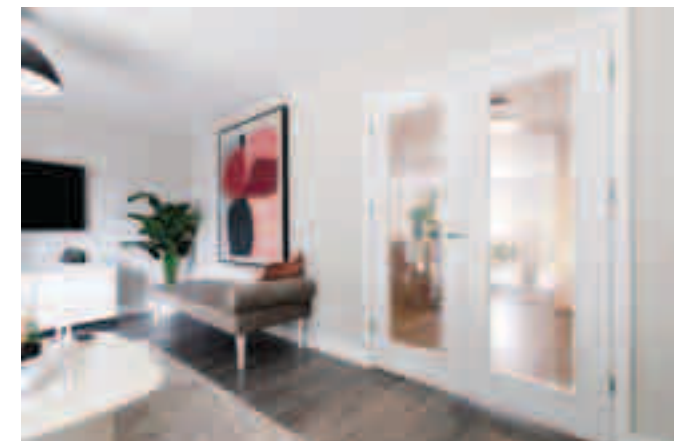
Bringing together some truly distinctive finish options in white, the White Collection by Vicaima, demonstrates that this fundamental hue is not actually a single colour, but has in fact a myriad of shades with both smooth and textural surfaces.

Furthermore, doors can be embellished to allow even greater design flexibility, by the addition of decorative face grooves and inlays, or even glazed patterns.

There are many inspiring finishes within the collection, however some of the most notable include: Laccdor in Satin White, with its tough, ultra-smooth curtain coated and UV cured lacquered paint finish; Dekordor 3D Cloud White, a highly tactile and durable surface, Dekordor SD White Woodgrain finished foil, for a bright white budget friendly pre-finished door.



Dekordor HD White, a continuous pressure laminate for demanding areas and for those who still prefer to paint their own doors, Primed 2 Go, with its revolutionary skin that requires no face sanding or priming and which will accept paint straight onto its smooth surface, to achieve an excellent end result. Few door manufactures offer such a comprehensive selection of crisp white designs as Vicaima.



Available in the full spectrum of dimensions, incorporating the unrivalled dependability of quality constructional cores and with benchmark performance for demanding situations. Vicaima White doors suit all types of projects and budgets, so take a closer look now by downloading the brochure or request a colour sample of your chosen finish from www.vicaima.com



Cupa Heavy 3 Slate Provides The Key To Scottish Bothy's Grand Renovation

Heavy 3 slate has been specified as part of a unique self-build residential home in the Scottish countryside. Showcased on the latest series of Channel 4's Grand Designs, Heavy 3 was selected to renovate the roof of a Grade II listed bothy that had to be incorporated into the property's overall design. The slate was the ideal solution to replicate the aesthetic of the original Scottish slate. Architect Iain Shillady, Director at Staran Architects, decided to carry out an ambitious conversion of the bothy – a form of basic accommodation for gardeners working on country estates – and walled garden, turning it into his ideal family home.

However, planning permission dictated that the architectural heritage of the property must be maintained, meaning that the bothy and garden wall had to be preserved to allow the project to take place.

As a result, Iain developed an innovative architectural design that divided the family home into two separate sections, split by a 13-metre skylight. In this design, the bothy, which was positioned against the garden wall, would be restored to house several bedrooms and act as an entrance to the property, with the rest of the house built within the large garden, hidden on the other side of the wall.

Due to the bothy's lack of upkeep, the original roof slates were damaged beyond repair and several sarking boards and head ends had succumbed to rot. However, the main ridge was salvageable. Iain approached Allan Liddell, CUPA PIZARRAS Technical Sales Manager for Scotland, to work with the project team and find a slate solution that would maintain the bothy's original aesthetic.

Allan recommended Heavy 3, a popular choice for projects needing a durable building material and a similar aesthetic to traditional Ballachulish Scottish slate. "Once we replaced the sarking boards and head ends, installing the Heavy 3 slates was a very straightforward process," commented John Carey, Director at Carey Roofers. "CUPA PIZARRAS offers the best slate on the market so I'm happy to install its products whenever possible."



Approximately 6,000 Heavy 3 slates were nail fixed to the bothy's roof. Produced in two thicknesses, in this case the extra thickness and weight of the 7-8mm variant provides the strength to withstand the high wind speeds and driving rain that is common throughout Scotland. Also available in a number of sizes, Heavy 3 size 300 x 200mm slate is widely used on conservation projects and comes with a 100-year warranty as standard.

"I'm very pleased with the final result," commented Iain. "The quality and the aesthetic of the slate were essential. I was already familiar with Heavy 3 as it is a common choice for our listed building work, so I was confident in the product. We opted for a slightly smaller format to closely replicate the Scottish slate originally removed from the bothy." The project is now complete and has recently aired on the latest series of Channel 4's architectural housebuilding programme Grand Designs, presented by Kevin McCloud. www.cupapizarra.com/uk





Le Chic, The Reborn Of Silestone® Veined Patterns

Cosentino launches Le Chic, the latest product offering from Silestone®. A juxtaposition to the more modern look of the Urban Crush series, Le Chic brings elegance and sophistication to the home. This new Silestone® series redefines a timeless classic. A step forward in veined-patterned surfacing with six designs available, that take inspiration from Victorian and Parisian spaces, with a nod to nostalgia with a modern execution.

Le Chic collection is an elegant and sophisticated offering that can be used in all areas in the house. The patterns feature expressive veins and metallic accents that stand out against neutral backdrops like cream or deep blues and blacks, creating depth. Supporting Cosentino's unwavering pillars of innovation and sustainability. Le Chic represents advancement in Cosentino's surface manufacturing, as the detailed veining requires an all-new technique of design. The intricate, interlocking veins are made possible by the brand's new moulding system, giving life to particles and minerals of a wide range of sizes and creating an incredible new texture.



Cosentino's patented HybriQ+® technology is involved in the process as Silestone® Le Chic is manufactured using 99% reused water and 100% renewable energy, incorporating a minimum of 20% recycled raw materials in its composition, that also has less than 40% of silica. Le Chic collection is composed of six designs: Parisian Blue, Eclectic Pearl, Versailles Ivory, Victorian Silver, Bohemian Flame and Romantic Ash.

Parisian Blue – Taking inspiration from the French Capital. This colourway boasts a deep bluish tone with strong personality and powerful character. Inspired by the shades seen in famous Imperial Roman stones, combined with fine veins in ochre tones.

Eclectic Pearl - One of the best examples of the core design idea behind Le Chic. Classic and modern, it features flowing streams of delicate tones incrustated with grains like diamonds on jewelry. (cont...)



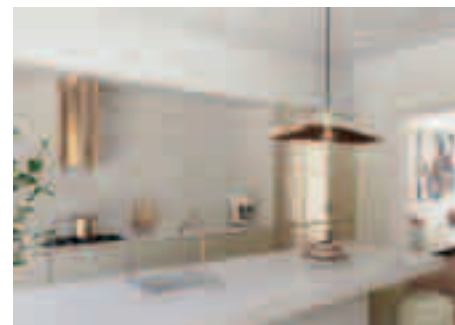
(cont...) Eclectic Pearl hypnotizes with delicate veining, texture, and metallic accents across the whole surface.

Versailles Ivory - The warmest tone of the collection. Very subtle two-toned marbling in the background with gradient effects mesmerize with the flickering lights of its golden sparkle. Versailles Ivory exudes luxury and elegance, reminiscent of the exuberance of the Palace of Versailles.

Victorian Silver - Soft a depth. The cool background tone blends with its silver and dark gray veins to create an elegant colour that fits seamlessly with warm and cold tones.

Bohemian Flame - This color presents subtle sinuous veins with metallic inlays in copper shades. The movement of the golden flows of lava that generate scars on volcanic soil inspires it. It's reminiscent of the calmly moving golden flame of candles accentuating tiny metallic pieces.

Romantic Ash - Another example of Le Chic's visual excellence. Large rivers and incrustations of grains in various sizes awaken memories of a milky way visible on a clear starry sky.



The accent of blue strengthens the depth of Romantic Ash. Silestone® & HybriQ+® Le Chic uses HybriQ+®, the exclusive and pioneering technology developed for Silestone® by Cosentino. HybriQ+®, launched in 2020, is a qualitative leap in the evolution of the Silestone® brand. It features a new production process demonstrating the company's commitment to the environment, the circular economy and sustainable management.

With HybriQ+®, in addition to Cosentino's environmental milestones, such as the use of 99% recycled water and 100% renewable electric energy, at least 20% of recycled raw materials are used in the manufacture of Silestone®. Furthermore, HybriQ+® technology stands out for its new formulation in the composition of Silestone®, where the presence of crystalline silica is significantly reduced. Urban Crush series has less than 40% crystalline silica in its composition. www.cosentino.com/en-gb/silestone



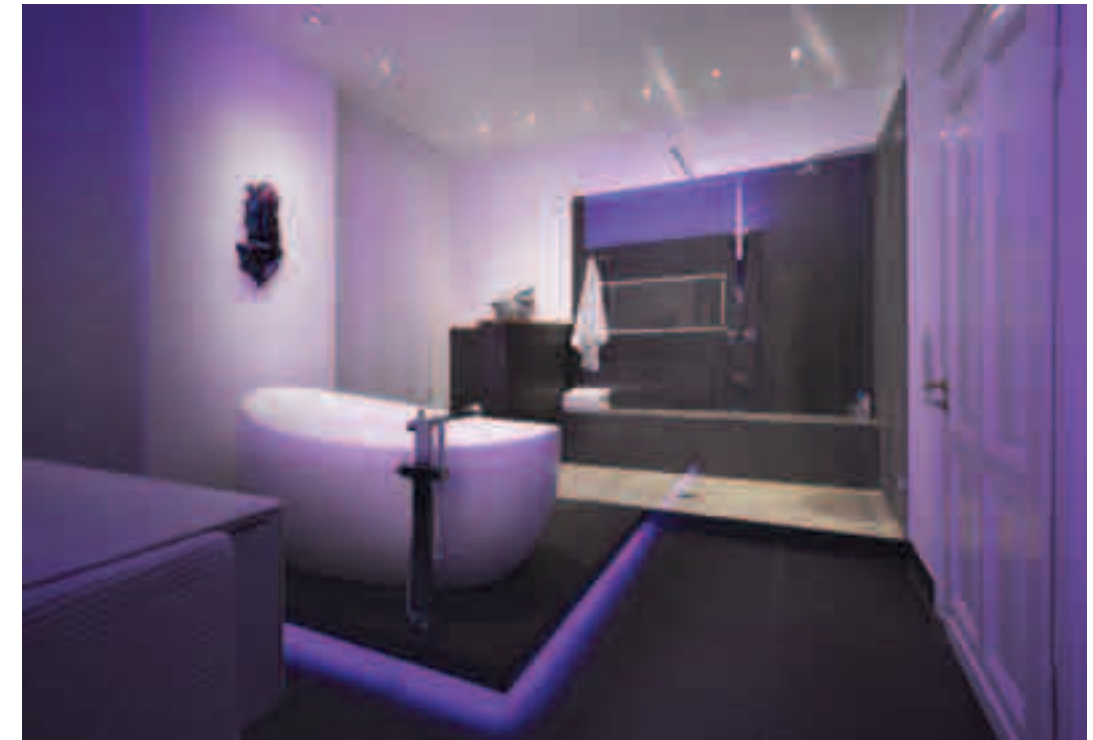
Schlüter-LIPROTEC Shines A Light On Interior Design

Schlüter-Systems has strengthened its portfolio of bathroom systems for the UK domestic market through the availability of advanced control light technology which enhances aesthetics whilst also offering almost unlimited creative choice. Encompassing the latest LED technology, Schlüter-LIPROTEC creates restful lighting for relaxing spaces, or bright, colourful lighting for a busy family bathroom or kitchen.

Schlüter-LIPROTEC has a broad range of applications, from direct or indirect lighting effects, enabling the interior designer, architect or property owner to illuminate feature walls, pictures, tiled areas such as shower enclosures or study spaces, kitchen countertops and stairways; in fact, anywhere the creative mind can conceive a plan for. The collection offers the option of

neutral white, warm white or RGB+W LEDs; the latter allowing for coloured and white LEDs on a single strip, to generate coloured light or temperature-controllable white light, which can be selected from 2500 K to 6500 K. The system can be programmed to deliver a choice of 16 million colours via a Bluetooth app and remote control.

Suitable for moisture-prone areas such as kitchens, bathrooms and showers, the LED strips are completely encapsulated and conform to IP67 protection rating. Schlüter-LIPROTEC-EASY is the company's simple plug-and-play version which comes with matching power supply units up to 100W.



The Schlüter-LIPROTEC-PRO series, meanwhile, is geared towards professional installers and offers bespoke lighting solutions. The LED modules are available either with a fixed white-light colour temperature of 3000 K or 4900 K, or with the full RGB+W colour range. Schlüter-KERDI-BOARD-NLT units are stylish niche sets fabricated from the company's KERDI-BOARD and featuring plug-and-play LIPROTEC-LED technology.

They can be used to create illuminated recesses and storage surfaces for all kinds of wall areas and are enabled with Bluetooth/wireless receivers. The various light colours can also be selected via the supplied remote control or suitable Bluetooth-compatible smartphones and tablets. The lighting collection embraces the company's extensive range of bathroom finishing solutions and, when deciding on the multiple variations of lighting,

Schlüter-Systems' customer services team is on hand to offer project and technical support with CAD detail. For those still seeking

ideas for their project, Schlüter-Systems has published a brochure covering all on-trend accent lighting solutions, while Virtual Worlds can be accessed online to browse the myriad lighting options available.

With more than 2,300 employees and seven offices across Europe and North America, Schlüter-Systems is the world's largest and most innovative manufacturer of system solutions for the function, protection and decoration of tiles and natural stone flooring.

Schluter-Systems in the UK offers a very wide product portfolio including the Schluter-KERDI range of waterproofing, the versatile tile backerboard KERDI-BOARD and its underfloor heating solutions, DITRA-HEAT and BEKOTEC-THERM. For further information, call 01530 813396 or visit www.schluter.co.uk

Style Divides Space Again For Prestigious London etc.venues Facility

Having previously divided the 1st floor conference facility when etc.venues initially moved into 155 Bishopsgate, London, Style was asked to add further space flexibility when the company recently expanded into the sizeable 2nd floor area. Working with Synergy Architects, and contractor, KPS Partnership Style recommended installing a single, 21 metre long Dorma Huppe Variflex moveable wall down the length of the main conference space.

A further five Variflex walls were then installed evenly spaced throughout the room, allowing individual meeting rooms to be created as demand dictates. Maintaining natural light throughout the space, pass-doors are all fully glazed, with an adjacent panel also being fully glazed in each instance. For added wow factor, solid panels feature eye-catching graphics.

"We have worked with etc.venues several times before," said Michael Porter, Style's group sales director, "and it is a privilege to continue being involved in creating market leading meeting, event and exhibition space that offers users outstanding flexibility."

etc.venues' mission is to rescue people from the tyranny of dull meeting venues by inspiring them with vibrant design and contemporary art, offering fresh and carefully sourced food, coupled with award-winning hospitality.

155 Bishopsgate has established itself as one of The City's most stylish conference destinations and one of the largest too, with a total capacity across the two floors exceeding 1,000 guests.



The new Variflex moveable wall arrangement enables etc.venues to host an extensive combination of meetings by closing off each area into smaller meeting rooms, opening up multiple rooms into one larger meeting area or moving all walls away to create a vast open plan conference/exhibition space.

With Style prioritising acoustic integrity throughout the installation process, coupled with semi-automatic operation that ensures the seals between the panels are expanded to exactly the right pressure every time, a 52dB Rw acoustic rating is achieved, delivering complete privacy between divided areas. www.style-partitions.co.uk





XTRA VIEWS

Highlights of this issue's XtraViews include:

Neil Kirwin, Specification Manager at SFS, discusses how early engagement can help improve space heating and an efficient thermal performance.

Adding a power supply infrastructure to an outdoor public space, such as a courtyard or enclosed garden, is an excellent way to unlock the potential for holding events and creating more revenue-generating space. But how can you ensure that the proposed power supply will meet the demands and needs of the site given the versatility that comes when an outdoor space is power-connected? Pop Up Power Supplies has the answer.

Creating a sustainable home is now a top priority for house builders, from locally sourced materials to energy efficiency measures. A recent survey by Marshalls showed that 43.5% of people would pay more for a home built with sustainable materials – motivated mainly by doing their bit for the environment and saving or generating energy for their home.

How Can Early Manufacturer Engagement Help To Achieve The Optimum, Efficient Thermal Performance?



Engaging with a building envelope manufacturer early in a project can generate a system specification that produces the most robust thermal specification.

Achieving thermal performance, or 'energy efficiency', in buildings is heavily reliant on specifying thermal insulation. Here, Neil Kirwin, Specification Manager at SFS, discusses how early engagement can help improve space heating and an efficient thermal performance.

Building envelope system suppliers can assist by providing U-value calculations to establish insulation thickness. Yet, engaging with a manufacturer early in a project will generate a system specification that optimises that insulation thickness and produces the maximum in terms of robust specification.

The obvious way to achieve lower U-values would seem to require thicker insulation. Yet, not only does the building envelope have to achieve its target U-values, it must be capable of resisting frequent extreme weather to reliably deliver U-values, and long-term comfort for building users.

Does thicker insulation equate to more robust thermal performance? - U-value targets set at a project's outset must be realistic. They should prioritise comfort whilst acknowledging that increasing the thickness of insulation layers is subject to diminishing returns. Thermal transmission is not linear; greater amounts of insulation are added to achieve smaller gains in U-values.

Increased insulation thickness have knock-on effects for the rest of the building envelope, such as increasing the length of fasteners and the length of cladding brackets. Costs can quickly begin to spiral in the name of achieving a marginally lower U-value, so obtaining advice about benefits and drawbacks of more insulation is essential.

Thicker building envelope solutions put greater pressure on the building footprint. If the space isn't available to accommodate the extra insulation, then the internal floor area has to be reduced to compromise.

Many buildings depend on maximising internal floor space, whether to achieve the highest commercial rental yields or to sell residential apartments at a premium. National building regulations set out calculation methods to establish appropriate U-values, but the regulatory requirements are not set with future climatic conditions in mind. If a robust specification is one that helps a building to be fit for the future, is it enough to design and specify only to building regulation levels of performance?

Using early-stage manufacturer engagement to improve resilience - Buildings that achieve better 'performance' or 'resilience' will be well-placed to command their value further into the future. 'Stranded assets' are a genuine concern for building owners and operators. Climate change risks buildings becoming unliveable or unusable, with the cost of retrofitting them being too high to justify.

How does this impact on the calculation of U-values? - Accuracy is key. It's possible to establish ballpark figures for building thermal envelope specifications, but they often make assumptions about the choice of brackets and fixings that bear no relation to the final specification.

As insulation thickness increases, the point thermal bridging effect of brackets becomes more pronounced, leading to thicker insulation materials, which makes the thermal bridging effect worse. It's easy to see how a vicious circle like this can soon derail specifications when they're only looked at in detail later in the project.

Particularly for very low U-values, getting appropriate guidance on bracket types and materials (aluminium or stainless steel?) in the early stages will help to guide setting out decisions. Those decisions shape the internal floor areas and long-term building comfort that can be achieved be achieved, so dealing with them from the outset significantly reduces the possibility of performance gaps.



Accurate, early technical design sets the tone for the project. Whether the end goal is 'just' regulatory compliance, or a building resilient for the climate in the year 2100, knowing that the thermal properties performance or energy efficiency of the building envelope has been set accordingly makes it harder to change later on.

Installers often review specifications purely on a 'cost per item' basis, and will seek to change individual components, with limited awareness of how they contribute to the complete system. Understanding that every element of the building specification has been specified with a certain performance in mind makes it much easier to 'defend' that specification against cost engineering exercises.

For more about robust, sustainable building envelope specifications, and the benefits of engaging with product manufacturers, in the series of technical papers in 'SFS Talks' here <https://uk.sfs.com/knowledge-hub/sfs-talks>

For further information, call 0330 0555888 or visit <https://uk.sfs.com>



How To Specify Outdoor Power Distribution Units To Meet Anticipated Demand

Adding a power supply infrastructure to an outdoor public space, such as a courtyard or enclosed garden, is an excellent way to unlock the potential for holding events and creating more revenue-generating space. But how can you ensure that the proposed power supply will meet the demands and needs of the site given the versatility that comes when an outdoor space is power-connected?

Over-specifying the services infrastructure and distribution units could be a costly mistake. But under-specifying could result in the need to hire temporary generators or run lengthy trailing cables from adjacent buildings, creating avoidable trip hazards.

Whether you are a site owner or an architect or landscape architect working to enhance an outdoor space, the starting point is to ask three basic questions about demand and needs:

- 1) How do you envisage that your proposed power unit or power distribution system will be used?
- 2) How many power sockets will be needed?
- 3) Would the location also benefit from a supply of water or data connectivity?

Designing-in versatility - Equipping any outdoor space with a power infrastructure is going to add a great degree of flexibility of use to the location. But when designing the power supply, it is important to have a picture of the typical and maximum usage that will be required.

Going back to basics, why is the site going to benefit from a power infrastructure? For a business such as a restaurant, bar, café or hotel, the outdoor space could add additional areas for eating and drinking primarily. Such uses would typically require the power distribution to provide access to sockets for lighting, till points, AV equipment or outdoor serving points



such as mobile counters or drinks dispensers. But is that the limit to such a site's potential? Could it also be used as a stage area for outdoor music performances and other entertainment, for example. And if so, would your proposed power supply solution accommodate these requirements too?

Also think about the location of the power units in relation to how they will be used.

If the site is to be used for market stalls, where will the stalls be set up on site and where will the main pedestrian routes be? Installing power units in the correct locations will help reduce the risk of trip hazards as cables trailing across the main footfall areas can be minimised or avoided completely.

Once you have a picture of how the site could be used, it is time to consider how you feed power to the locations across the space. This can be achieved with the installation of a Pop Up Power Supplies® power distribution unit in one of three forms:

- 1) Pop up, retractable power unit – this is submerged in the ground until it is needed, and raised/lowered using a turning handle.
- 2) Flip-lid, in ground power unit – this is permanently submerged in the ground with access provided via a flip-lid which can be used while the lid is locked down.
- 3) Power bollard – a street furniture element which has power sockets integrated, accessible as required behind a lockable cover.

The type of power unit you choose will depend on how the site will need to look or be used when the space is not being used for events, catering, etc. Both the pop-up and in-ground units can be hidden away when they are not in use, with the only evidence being a cover which can be designed to match surrounding surface materials.

A power bollard has a permanent presence, but the designs available from Pop Up Power Supplies® are elegant to avoid the utilitarian appearance that would be expected with a typical feeder pillar.

What should each power unit provide? - Consider what the electricity demand will be for the equipment that is to be connected to ensure the power supply units can handle the load. This is an area where Pop Up Power Supplies® has a wealth of expertise to help, given our experience of providing power units for a diverse range of sites across the UK, from Caerphilly Castle visitor centre to Chelsea FC's Stamford Bridge pitch.

The retractable power units available from Pop Up Power Supplies® can be specified to provide a total power supply from as little as 63 amps right up to 600 amps. In ground units offer the option of 63 amps or 125 amps and power bollards provide up to 125 amps. The sockets in all can be configured to suit usage requirements.

These units can also be designed to provide a water supply or data connectivity. Access to water can be particularly useful for ground maintenance and cleaning purposes, so consider that too and the units can become extremely useful assets.

www.popuppower.co.uk



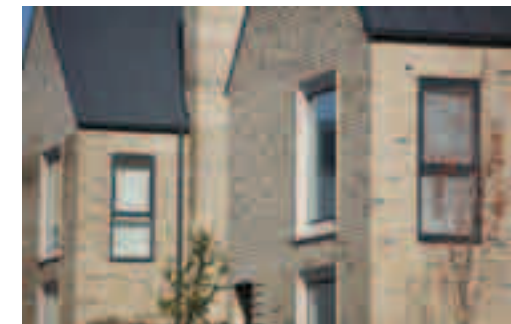
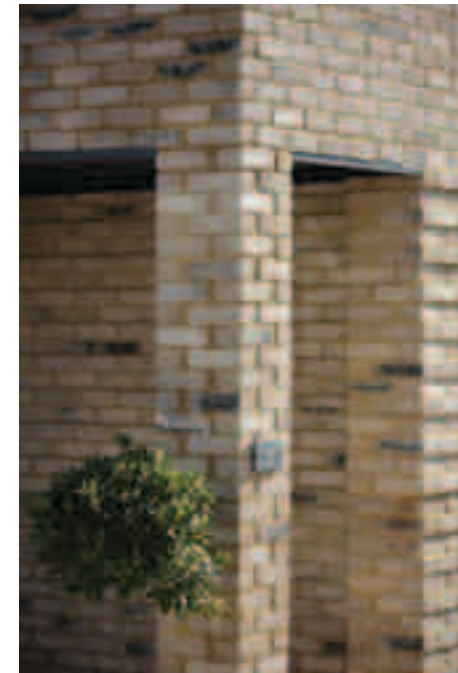
Changing The Perception Of Concrete Bricks Could Be The Key To Unlocking Carbon Savings In New Homes

Creating a sustainable home is now a top priority for house builders, from locally sourced materials to energy efficiency measures. A recent survey by Marshalls showed that 43.5% of people would pay more for a home built with sustainable materials – motivated mainly by doing their bit for the environment and saving or generating energy for their home.

This insight, combined with the post 2025 targets in the Future Homes Standard, it's clear that there is work to be done. Whilst some developers are focusing their energy efficiency efforts on choices for interiors, the savviest are revisiting the materials they use for exteriors and initial build, instead. And, for some, this starts with the concrete brick.

Revisiting the concrete brick - The manufacturing process of concrete bricks is partly what makes them a more sustainable option over traditional clay facing bricks. For clay bricks to harden they need to be fired in fossil-fuelled kilns, creating significant carbon emissions.

Concrete facing bricks, on the other hand, harden naturally through an exothermic process, meaning that significantly less energy is needed in their curing. In addition, concrete actually absorbs CO₂ over its lifetime - a completely natural process referred to as carbonation or "sequestration"; bricks absorb CO₂ from the atmosphere as they age and harden.



Once the CO₂ comes into contact with the concrete, a catalytic process permanently transforms it and locks it into the material, so even when the product is crushed at the end of its lifecycle the carbon will not escape. The brickwork element alone for Marshalls concrete bricks, for instance, can absorb 4.2kg of CO₂ per square metre over a 60-year lifespan, and the total lifetime reduction in CO₂ compared to traditional clay facing bricks on the market has been calculated at 49.1%.

Carbon sequestration - Following a successful trial last year, Marshalls are now using a process called carbon sequestration to lock even more carbon into their concrete bricks. Currently being used on their Fairway from Grove range, waste carbon is injected during the manufacturing process with no impact on the materials' performance, durability or appearance.

Case study: 93 tonne carbon saving delivered on major housing project - Marshalls Bricks & Masonry helped housebuilder Backhouse save 93 tonnes of carbon thanks to using concrete bricks rather than conventional clay alternatives. The Mayfair Vintage facing brick was chosen for the Merlin Rise development to achieve a high-quality, reclaimed brick aesthetic that aligns with Backhouse's sustainability goals. The Merlin Rise development was Highly Commended in the Development of the Year category (20-100 units) at the British Homes Awards 2021 and was shortlisted for the 2021 AJ Architecture Awards, Housebuilder Awards and Building Awards. www.marshalls.co.uk



XTRA ONSITE

Highlights of this issue's Xtra Onsite include:

Mapei has provided a repair and installation solution for a swimming pool in the heart of Norfolk. The Mapei system was used to completely renovate the 15m outdoor swimming pool from the base up, and install Cupira Marengo porcelain tiles from Ceramica Mayor.

A regional developer, renowned for designing and building high specification homes in Surrey and beyond, selected cast stone components from the Haddonstone range for an enclave of four and five-bedroom properties, where planning conditions were amongst a number of challenges. One of Triton Systems most experienced installers has employed a package of its waterproofing products, while carrying technically challenging improvements to the basement and substructure of a 19th century watermill in Kent.

Luxury Vinyl Tiles and Heterogeneous Vinyl from IVC Commercial have given entertainment venue, Viva Torquay, an interior thats ready for creating a vibrant and welcoming experience.

Mapei System Repairs & Transforms Outdoor Pool, From The Ground Up

Mapei has provided a repair and installation solution for a swimming pool in the heart of Norfolk. The Mapei system was used to completely renovate the 15m outdoor swimming pool from the base up, and install Cupira Marengo porcelain tiles from Ceramica Mayor.

The three-year old outdoor pool showed extensive signs of failure. The comprehensive Mapei specification was used to repair, waterproof and seal the concrete base and install porcelain tiles within the pool and across the surrounding patio.

In the first phase of works, the pool base was repaired with Mapei Planitop Fast 330 quick-setting, fibre-reinforced cementitious levelling mortar and then waterproofed with Mapelastic Foundation flexible cementitious mortar, incorporating Mapenet 150 alkali-resistant glass fibre mesh and Mapeband 120mm alkali-resistant rubber and felt tape for dealing with movement. D C Building Services then repaired the concrete around the inlet/outlet pipes with a single layer of rapid-set Mapei Planitop Smooth and Repair R4 – a shrinkage compensated, thixotropic, fibre-reinforced cementitious mortar.

The whole of the drainage channel was then waterproofed using Mapei Planiseal 88 osmotic cementitious mortar and Mapeproof Swell applied – a moisture expanding, rubber-based hydrophilic sealant – to make joints around pipework and lights waterproof. During the final phase of works, tiles were installed with Keraquick S1 – a very low VOC quick-setting, deformable cementitious adhesive, mixed with elasticising latex, Mapei Latex Plus.

The porcelain tile specification included 37.5 x 75cm tiles for the pool, 60 x 120 cm tiles for the pool surround and matching trim pieces for corners and to create the step.

The installation was completed with carbon neutral Ultracolor Plus – an anti-efflorescence, quick-setting and drying polymer-modified grout, featuring water-repellent DropEffect® and mould-resistant BioBlock®; ultra-fast setting and drying hydraulic binder – Lamposilex – and mould resistant silicone sealant, Mapesil AC. www.mapei.co.uk



Castle Green Developments Selects Tecstone For Super Stylish Surrey Homes

A regional developer, renowned for designing and building high specification homes in Surrey and beyond, selected cast stone components from the Haddonstone range for an enclave of four and five-bedroom properties, where planning conditions were amongst a number of challenges. Castle Green Developments purchased the land for its Welcomes Road project in Kenley near Croydon, with aspirations for maximising the site's potential. The company subsequently secured permission to build a total of eight contemporary-style homes, with the quartet to the front having their four-storey main elevations enhanced through the inclusion of a £24K package of bespoke and standard products manufactured from TecStone material, set in brickwork which itself included multiple specials.

Oliver Trendle, a director of the family-run developer, commented: "The Welcomes Road project was complex and challenging, due in part to the limited space available and intricate stone and brick features. We are now down to the final landscaping works, and all but two have already sold, achieving £900K+ values. The four to the front were really quite intricate: featuring a dozen different brick types as well as the Haddonstone stonework which was chosen as we were looking for something striking and aesthetically pleasing in order to build our case for the number of dwellings we were seeking to deliver." All produced in the Portland finish, TecStone elements included gable vents and copings, as well as corbels, window heads, and a vertical radius coping which featured balls and bases to create the appearance of a balcony or jetty. Cast stone date plaques completed the ornate frontage. www.haddonstone.com



Oxford College's Facility Fire Protected Using 9mm Magply Boards



The alterations and refurbishment of the SCR, Dining Hall and Kitchen at Trinity College Oxford are nearing completion with 9mm and 12mm Magply boards from the range of IPP Ltd. being used in some situations, having been specified to provide the necessary fire compartmentation, as well as other performance benefits. The work to fit out the kitchen, bar, offices, fully accessible toilets and ancillary areas is being undertaken by Savvy Construction, from nearby Horspath, while Original Field of Architecture is the architectural practice responsible for the design work.

This has included using two layers of the A1 rated, non-combustible Magply to clad either side of timber studwork in order to create a half hour separation and provide compartmentation for a single storey staff sitting room. Independently tested to demonstrate they offer A1 non-combustible performance, Magply boards are routinely specified in place of OSB and plywood as a sheathing for steel framed high-rise properties, as well as in flat and pitched roof construction. Additionally, with an ultra-low 0.01 % chloride content, the stability and durability of Magply sees it recommended as a backer board for proprietary render systems. www.magply.co.uk

Steel Windows And Screens Deliver Style To Enhance Interior Decor

Strong yet comparatively slim steel frame sections are well recognised amongst architects for offering excellent light transmission, while the slender sightlines are also ideal for allowing windows to “bring the outdoors in.”

However, contemporary systems available from members of the Steel Window Association (SWA) can also play a pivotal role in influencing interior fitouts. The unexpected property boom from the pandemic included people adding extensions or improving their homes and saw SWA members responding to high demand for both classic and contemporary steel windows, doors and interior screens.

In fact, the latter has proved ideal for creating home offices or subdividing living spaces without significantly cutting light reaching deep plan areas; while introducing an aesthetic often described as industrial but also sophisticated.

Getting the best from these versatile, high-performance systems does, though, require careful consideration of both potential suppliers and between the multiple systems available which offer a choice of performance as well as appearance.



Ethan Blackman, Contracts Coordinator for long-established SWA member, Cotswold Casements, comments, “In terms of the way projects are specified, normally we get clients (property owners) being directed to visit our showroom by their design consultants once the decision to utilise steel frames has been made, so that they can decide on items like ironmongery or type of opening light.”

“While a lot of our clients have already decided that they want the slim sections and large pane size that steel windows offer, they still want to view the past projects to help visualise how their own properties might turn out. There are a lot of nice-looking buildings on our website including commercial buildings! Normally they will send us their architects’ drawings detailing what they are trying to achieve. We will then respond with CAD drawings and a quote.”

“We’ve also invested in a new CRM system which enables everyone involved in a contract, including the client and our production team, to keep track. Plus, we have new window making software – all of which helps improve the customer journey, and the turnaround time.”

Interestingly, there is a perception in the market that the vast majority of steel doors and windows are produced in black, but while it is a popular colour, Cotswold Casements is one of the SWA members seeing a lot of interest in Anthracite and other shades of grey, as well as brighter colours, like Cotswold Green, white and even the stark ‘Industrial Patina’ finish.

The latter is proving particularly popular for warehouse and barn conversions, along with heritage buildings generally. Property owners and professionals can use the “Find a member” facility on the SWA website to identify a manufacturer in their locality or offering the particular area of speciality that their project requires, in order to obtain a steel window package produced to a high standard which will be correctly installed.

The SWA offers UK wide coverage with member companies able to carry out the full range of contracts from the repair and restoration of heritage windows through to the installation of major fenestration packages in contemporary commercial, residential and other types of developments.
www.steel-window-association.co.uk

Bournemouth Builder Hails Benefits Of West Fraser Panels

An experienced carpenter and builder based near Bournemouth who has been involved in the construction of bespoke homes for two local developers, has taken to social media to demonstrate the speed and efficiency of installing West Fraser's CaberDek, as well as the manufacturer's SterlingOSB Zero. Steve Mayes has now become a self-employed member of the erection team for the Glass Harbour Group and Ashhaus Construction. Amongst the properties currently under construction are two mirror-image, three-bedroom detached houses where the stick-build frames are being sheathed with 11mm SterlingOSB Zero to provide racking strength. Then at first floor level, Steve and his fellow chippies are laying 22mm CaberDek across the floor joists prior to installing the wall plates: as illustrated at <https://www.instagram.com/stevemayeschippy/>

CaberDek panels measure 600mm wide by 2400mm long. CaberDek is available in an easy to install and familiar T&G format, making it the ideal choice for housebuilders or sub-contractors to ensure rapid installation, ready to face the toughest of conditions on site. All West Fraser panel products produced in the UK are net carbon negative and manufactured in mills that have obtained the coveted environmental ISO 14001 accreditation. Responsibly sourced, the panels are FSC certified and created from locally grown timber, cutting embodied carbon from transportation. For further information, call 01786 812 921 or visit Uk.westfraser.com



Triton Systems Used In Underpinning Old Kent Water Mill

One of Triton Systems most experienced installers has employed a package of its waterproofing products, while carrying technically challenging improvements to the basement and substructure of a 19th century watermill in Kent. Archer Specialist Treatments was called in by the South African based owner of the scenic residential property near Ashford, owing to it suffering continuing problems of water ingress as the floor level lies nearly two metres below the surface of the old mill pond.

Paul Halliwell, a Chartered Builder and Director of Archer Specialist Treatments, recounted: "The waterproofing and conservation work on this old water mill were made more complicated by the fact that the floor level had been previously lowered by another building company, without properly tanking the structure and also the fact the client wanted to retain a decorative stonework wall within the basement."

The remedial foundation works involved excavating one metre long sections of the old blue clay sub-soil from beneath the existing footings to a width of 400 mm, before installing reinforcing cages and building a shutter to retain high strength concrete. Once this had reached sufficient strength, the intermediate sections were dug out and cast before Triton's CM8 studded drainage membrane was installed along the full 10 metre length. This drains down into a similar length of Triton Aquachannel, connecting to one of the manufacturer's submersible pumps. www.tritonsystems.co.uk



Stamisol Safe One Chosen For Supported Living Apartments



Building membrane specialist, ITP Ltd, has supplied Stamisol Safe One, the UK's most advanced breather membrane, for a development of supported living apartments in Gateshead. The three-storey building Astell House includes 12 apartments, offices and communal space developed by Home Group, a leading provider of integrated housing, health and social care. Structural steel specialists. Intelligent Steel Solutions Ltd, installed Stamisol Safe One within the external wall to maintain the long-term condition of the building envelope.

The membrane provides effective and durable protection against rainwater while allowing the release of internal water vapour, preventing the build-up of condensation in the insulation layer. Stamisol Safe One is the first breather membrane in the UK to combine a W1 rating for water tightness, breathability to BS5250 standards, waterproofing of 7,000mm, UV resistance of 5,000 hours and a Euroclass A2 limited-combustible rating, going above and beyond the fire safety standards required under post-Grenfell building regulations.

ITP Account Manager, Caroline Collins, said: "The system is an especially popular specification for high-rise and higher-risk buildings as its Euroclass A2 credentials match the standards required by law for cladding, ensuring that fire safety is maximised throughout an external wall. Stamisol Safe One is manufactured to provide those safety standards without compromising the effectiveness of its primary functions in allowing the building to breathe and preventing the ingress of rainwater." itpltd.com



Viva Torquay Makes More Of Its Floor With IVC Commercial

Luxury Vinyl Tiles and Heterogeneous Vinyl from IVC Commercial have given entertainment venue, Viva Torquay, an interior that's ready for creating a vibrant and welcoming experience. With a vision for a modern street food restaurant on the ground floor with a games zone on upper floors, the owners of Viva Torquay have turned an old and weathered fish and chip shop into one of the town's best entertainment venues. Viva Torquay is now a year-round destination for the town's residents and seasonal holidaymakers. As part of the refurbishment of the building, a range of floors from IVC Commercial have been chosen, turning the 500m² games zone into a compelling and mesmerizing play of pattern and texture.

Moduleo Roots Luxury Vinyl Tiles in Country Oak and Glade Oak create a striped design across the space, adding a welcoming ambience thanks to their natural wood aesthetic with the monochromatic look matching the black ceilings and white painted architectural details of the historic building. Teamed with floor-level LED lighting, it's a striking effect that also helps to zone activity areas. The floor is ideal for the daily demands of the busy venue. Elsewhere in the games zone, IVC Commercial's Heterogeneous Vinyl floors feature with the vibrant Optimise 70 in crystal pink and Isafe 70 in mustard bringing vibrant colour to the floor. These hardwearing and easy to maintain floors stay looking good under intense use. Optimise 70 offers improved impact noise reduction, while Isafe 70 delivers 42+ TRRL slip-restraint. Both floors feature Sanitec for additional antibacterial protection. www.ivc-commercial.com

Firefly ® Zeus Horizontal Barriers Protect East Midlands Office's Stair Cores

High performance but low weight fire barriers from the range of FIREFLY ® have been specified by one of the manufacturer's accredited installers, to upgrade the fire protection within the stair cores to a large office property in the East Midlands continuing a burgeoning business relationship between the two specialists. The work on the two-storey commercial property, which dates from the 1990s, has been carried out by Coventry based KRASI Fire Protection using the FIREFLY ® Zeus Horizontal 60:30 barrier, with FIREFLY's Technical Manager for the region attending site to offer design guidance, as well as during the contract period.

The improvements were confined to the first-floor ceiling voids above each of the building's four staircases, but will help ensure escape routes are maintained in the event of any future emergency. FIREFLY ® Zeus Horizontal is a lightweight flexible fire barrier designed to provide fire compartmentation of larger concealed spaces and voids within buildings, offering 60 minutes integrity and 30 minutes insulation. It has been specifically developed and tested for horizontal installation, including fitting around service penetrations. Manufactured from woven and non-woven glass, the FIREFLY ® range is designed to optimise resistance to flame and smoke as well as offer heat protection in a wide range of scenarios. The barriers are easy to install horizontally or vertically using a full selection of FIREFLY ® ancillary products to ensure a fully tested and certified installed system. www.tbafirefly.com



Traditional Timber Windows And Doors

The Sash Window Workshop specialise in replacing and draught proofing traditional timber windows and doors. They were recently contacted by an architect on behalf of his client to replace the sashes in a period property in South East London. The new sashes needed to retain the traditional style of the existing windows, while upgrading from single glazing to double glazing. A visit was arranged by The Sash Window Workshop's salesperson, to check the condition of the windows, and a quotation was sent across. The homeowner decided to proceed with the quotation, and an additional survey was arranged to check the exact details.

This was especially important due to the bespoke nature of installing new sashes into the existing window frames in traditional timber windows. The new sashes were then manufactured at the company's workshops, before being installed by their fitters. One of the windows was particularly challenging to install because it spanned two floors, with stairs against the inside of the window. Upon completing the work, the homeowner commented that they were very happy with the product and service that they received, noting that they would have no hesitation in recommending The Sash Window Workshop to others.

The company offers installation and repair services across London and Southern England, with a supply only service nationwide. Where necessary, they can comply with listed building or Conservation Area requirements. New joinery is manufactured by their team of skilled craftsmen in Berkshire. The company uses Accoya as standard, which is known for its stability and durability and comes with a 50-year anti-rot guarantee. To obtain a quotation for your project, contact The Sash Window Workshop on 01344 868 668 or visit www.sashwindow.com

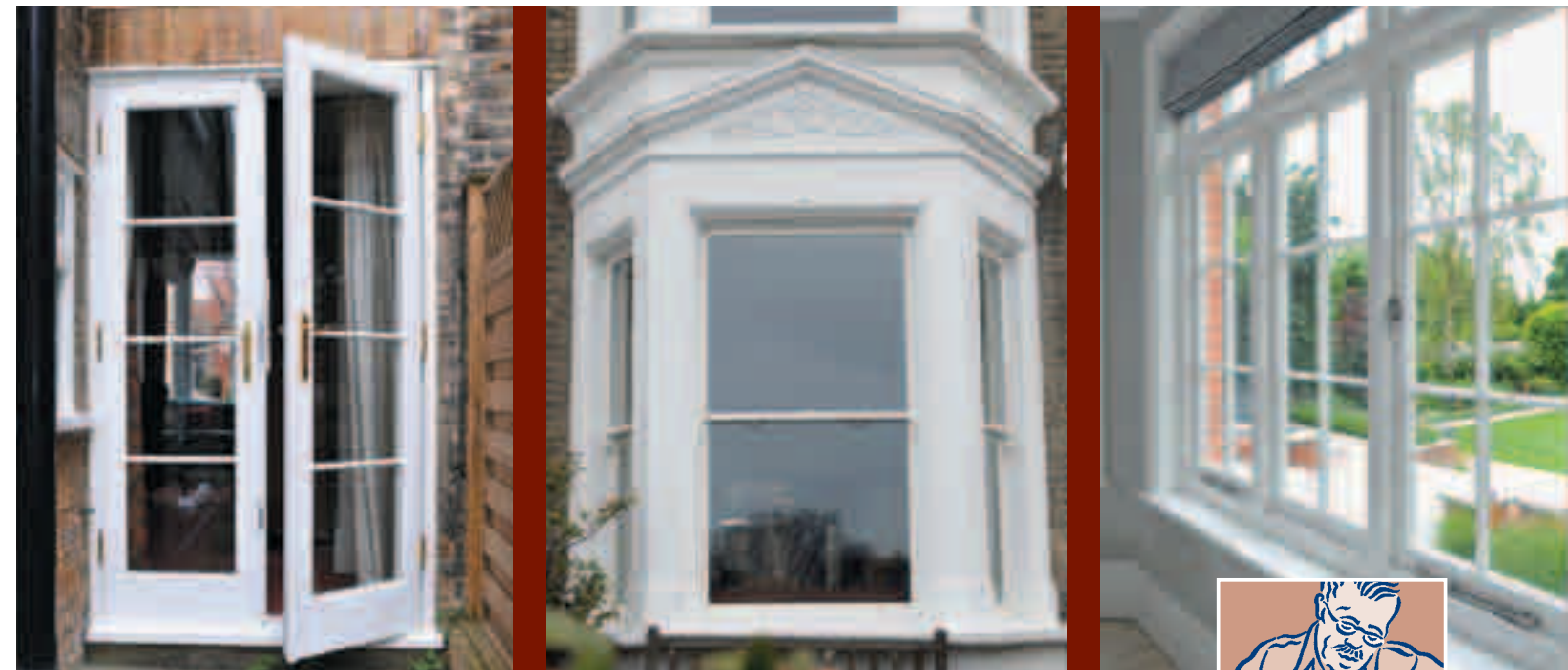


A New Lease Of Life For Landscape Thanks To Haddonstone's Stonework

Haddonstone, the UK's leading name in cast stone design and manufacture, was selected to create a range of high-quality cast stone landscaping components for the considerable gardens at a beautiful, historic property in Leicestershire. Much of the existing stonework throughout the grounds of the property had weathered over decades of exposure to the elements.

An important requirement from the estate's discerning owner was that new stonework, along with restored pieces, were as close as possible to the originals in terms of design, colour and texture. Specialising in restoration and replication, Haddonstone's team was perfectly placed to bring the historic landscape back to life. Each component for the project was produced by specialist craftsmen in Haddonstone's Northamptonshire manufactory. Firstly, a special bespoke colour was agreed with the client to ensure that each landscaping element would seamlessly match with the existing stonework.

Key elements of the new scheme included a cast stone balustrade as part of the refurbishment of the existing bridge, cast stone steps leading up to a terrace, and cast stone copings as wall dressings; while each stone design was manufactured using Haddonstone (semi-dry cast limestone) material. www.haddonstone.com



Traditional Timber Windows and Doors

High quality, energy efficient timber windows and doors. Conservation Area specialists. Supply only, supply and install, secondary glazing, and draught proofing.



01344 868 668 www.sashwindow.com



**THE SASH
WINDOW
WORKSHOP**

CUPACLAD® Brings Aesthetic Excellence To Exeter Student Accommodation

CUPACLAD® 101 Logic was recently specified by student accommodation provider Study Inn for a large-scale building at Walnut Gardens, Exeter. The natural slate cladding system was chosen for its durability as well as its premium aesthetic.

The project involved the demolition of an empty office building on the land at Walnut Gardens and construction of a high-quality student accommodation block, which would house up to 166 students.

Located in an affluent part of the city, the design would need to match the high-end, visually attractive buildings that surround the site. Furthermore, it was crucial that the materials used were highly durable

and weather resistant, to ensure that the accommodation could endure for a significant amount of time with minimal maintenance required.

CUPACLAD® 101 Logic, a rainscreen cladding system, was specified to help achieve this. Installation was simple. First, the insulation material was fixed to the building's exterior using metal brackets.

CUPACLAD® 101 horizontal profiles were installed followed by the 40x20cm natural slates, in a 7.65mm thickness. These were fixed horizontally using self-drilling screws, which are invisible post-application to ensure that the overall design and aesthetic is not impacted.



Installation was a straightforward process, partly due to the lightweight of the system, with each natural slate weighing less than 30kg/m². The slates were easy to cut and work around openings and features, while the self-drilling screws help to secure each slate to the substructure. Now complete, the dark cladding provides an effective contrast with the glass and render sections of the building to deliver a strong overall aesthetic with striking impact. As a natural product, the slate elements of the façade also complement the building's leafy surroundings, as well as other local buildings made from similar materials.

"Finally, as with all of our products, the natural slates used in the cladding system at Walnut Gardens are classified as A1 non-combustible in accordance with current building legislation," said Simon Hope, Product Manager at CUPA PIZARRAS. "They are also highly durable, weather resistant and waterproof ensuring a performance life of over 100 years, with no noticeable colour fading. As such, our natural slates offer the ideal material for high-rise, exposed applications like this one." www.cupapizarra.com/uk/rainscreen-cladding

Flexible Event Space for Rangers Football Club



Glasgow's Edmiston House is a state-of-the-art facility that incorporates the Rangers Football Club museum, a two-storey Rangers FC store and a spacious events area. Partitioning experts, Style, worked with architect, Keppie

Design, and contractor, Sharkey to deliver flexibility to the function space, installing two Dorma Hüppe Variflex moveable wall systems.

Cleverly designed, the walls meet to form a T-shape, allowing the area to be divided into two individual rooms linked by an external corridor. For maximum functionality, both rooms have pass doors, fitted with push-bar panic hardware to meet evacuation regulations, giving entirely separate access. The Variflex walls offer a superb 57dB acoustic rating which enables concurrent events to take place undisturbed.

A truly world-class resource, Edmiston House is not just for Rangers but for the local community and the city of Glasgow. The highly adaptable event space can be used to host seminars, conferences, gigs, exhibitions, awards' ceremonies and as a fan-zone on important match days. "This is a great example of where moveable walls can be combined to create a really flexible room configuration," said David Loudon, Style's director for Scotland.

"As the room can often host lively events, the acoustic rating is also a huge benefit as it means two events can be hosted without interfering with one another. "The classic Pearl Grey III finish on these moveable walls also works well, offering not only an adaptable space but a stylish one too."

Style is the UK's leading provider of moveable, partitioning and folding walls and is the exclusive UK partner to Dorma Huppe, Skyfold and SWG. www.style-partitions.co.uk



W40 Steel Profiles An Ideal Match For Modern Living

The versatile W40 window profiles, specifically developed by the Steel Window Association (SWA) for its members, are a stylish and modern solution that suit both new-build and refurbishment applications. While the classic W20 section continues to be preferred by conservationists and many property owners for early 20th century and older properties, W40 exemplifies how steel fenestration systems have kept pace with modern tastes and technical demands, while retaining key attributes such as strength and excellent daylight transmission.

Today's W40 profiles, manufactured from hot rolled steel, provide greater flexibility than their predecessors, being able to accommodate thicker double or even triple glazing units. They are also capable of creating larger window openings without coupling individual frames together. Doors manufactured using W40 profiles and featuring double or triple glazing can achieve very good thermal performance, while further providing excellent security; with multipoint locking being an option.

The preferred IG unit for a building regulations compliant W40 steel window now features a 4-8-4-8-4mm construction, with two soft-coat Low-E panes;

plus warm edge spacer bars and argon gas filling. They can also contain acoustic glass, making W40 designs ideal for many inner-city areas where noise pollution is a common issue. The SWA represents steel window manufacturers, from expert restorers working with heritage bodies and local conservation officers, to large companies producing W40 frames for commercial offices and leisure destinations as well as modern apartment blocks, schools, hospitals, and other public buildings.

Significantly, W40 profiles can be used to fabricate a wide variety of opening formats, including multi-leaf folding/stacking doors, in a full selection of RAL colours. The SWA offers UK wide coverage with member companies able to carry out the full range of contracts from the repair and restoration of heritage windows through to the installation of major fenestration packages in contemporary commercial, residential and other types of developments.

For further information on the Steel Window Association or if you're interested in becoming a member, please visit www.steel-window-association.co.uk





Schlüter-Systems Adds Warmth To Luxury Hotel And Spa

Tile and stone experts, Schlüter-Systems, were involved in the renovation and restoration of The Newt Hotel and Spa, a stunning country estate surrounded by beautiful gardens, nestled within the heart of Somerset. The project consisted of three different areas: Hadspen House, The Farmyard and Barton Spa. The spa was designed from scratch to serve as an enticing draw for guests to relax, whilst the other locations were renovated, giving the estate a new lease of life.

Hadspen House is the main house which was originally built in the 17th century, the restoration of which has created luxurious hotel rooms for guests. The Farmyard, located on the same estate nearby to Hadspen House, is home to further accommodation, in addition to community spaces. The addition of the spa to this historic estate has allowed for an exclusive guest-only space, which offers rest and relaxation.

Among many products used in these projects, one of Schlüter's flagship products, DITRA-HEAT was used throughout the project in a variety of ways, from undertile heating for the flooring in the guest bathrooms of Hadspen House, to creating comfort seating in the spa area of Barton Spa. Pairing these trusted solutions with the expert technical knowledge supplied, ensured that the finished projects were impressive in both style and substance.

Barton Spa - Schlüter took on the most significant role for the creation of certain elements of the newly built spa facilities which adjoined Hadspen House. Schlüter-KERDI-BOARD, a tile backerboard, helped construct multiple focal points within the spa area, including the vanity units in the male and female changing rooms.

The portico around one of the doors in the main spa was a particularly eye-catching element which added character to the space. The durability of the tile backerboard allowed for 20mm Carrara Marble to be easily fixed over for a beautiful and luxurious finish.

Heating elements were also provided with the help of Schlüter-DITRA-HEAT-DUO, the electric undertile heating system. The system was used on benches and seats which were then clad with Carrara Marble, meaning that there was a uniform look with the desired comfort element provided alongside it – resulting in the perfect spa experience for guests to enjoy.

Hadspen House - Already a beautiful Georgian Manor House with a rich history, Hadspen House undertook a restoration to ensure it would be future proofed for years to come whilst keeping the original charm intact. Whilst the whole manor was given an upgrade, the main work carried out by Schlüter was to provide underfloor heating systems to the guest bathrooms.

This involved the reliable and popular membrane Schlüter-DITRA-HEAT-DUO to offer guests a level of indulgence to match the inviting ambiance the hotel provides. Schlüter's DITRA-HEAT products are designed for the attachment of cables, and serve as uncoupling, crack bridging, waterproofing, vapour pressure equalisation layer.

The Farmyard - Originally a Grade II listed farmhouse and several outbuildings, The Farmyard undertook a substantial conversion to create accommodation, a Farm Shop and Cider Press which gave the estate an even stronger sense of community.

A challenge which presented itself almost immediately was the need to seamlessly incorporate modern products and practises into a building that has deep roots into the past. There was a desire to keep many of the original features whilst producing design elements which were both contemporary and stylish.

The bathrooms involved utilising the Schlüter-DITRA-HEAT-E for underfloor heating. The project was an exciting way to breathe new life into an estate that was already full of personality, ensuring it would be enjoyed for years to come. www.schluter.co.uk



Schöck Thermal Breaks And New Dowels For Major Swansea Office Development

A major new high-tech office development in Swansea city centre is fast taking shape. The five-storey building, known as 71/72 Kingsway, is a carbon-zero development with two underground levels. It is part of a major transformation of the area and will provide 114,000 square feet of flexible co-working and networking office opportunities for 600 jobs in the innovative tech, digital and creative sector businesses. The offices will feature state-of-the-art digital connectivity and integration with smart city technology, conference and meeting facilities.

Balconies, a green rooftop terrace and atriums are also incorporated. The building detail required thermal insulation of the highest standard, along with high-performance expansion joints. With its comprehensive range of structural thermal breaks and the new Stacon dowel product, Schöck was ideally placed to meet the necessary requirements.

There were technical challenges though - The main issue was the retaining wall in the basement and ground floor area, which put axial pressure onto the structural Isokorb thermal break elements. As a result, it was necessary to calculate both the compression from this force and the moment resistance based on the residual capacity of the in-situ thermal breaks. At the second and third floors, the placement of the column grid was unconventional and converse to the usual external-to-internal arrangement. So the elements were in effect installed in the opposite direction to what would normally be anticipated.

To combat any effects of thermal bridging throughout the RC construction, namely heat loss, damp and mould formation, a variety of Isokorb thermal break types were incorporated. Those most extensively used though are the T type K and the XT type K. Both are load-bearing thermal break elements for concrete cantilevered balcony construction, transferring moments and shear forces. They have 80mm and 120mm insulation thickness respectively.

New Stacon dowels used for the first time - There were a number of large beam forces to transfer on the upper levels and the newly launched Schöck Stacon dowels were used for the first time in the UK.



This new dowel, the type SLD, is really compact and as the anchoring bodies have been reduced in size, it has the advantage of enabling higher loads to be installed in thinner slabs and walls, optimising on-site reinforcement. Stacon has been awarded UK Technical Assessment (UKTA) along with fire protection classification R 120. It is fully supported with Scalix design software too, the first web-based application for the design of shear dowels.

A dependable and fully compliant product range - The Schöck Isokorb range of structural thermal break solutions is the largest in Europe and in the UK helps projects meet full compliance with the necessary Building Regulations. In addition to the Isokorb type used on this project, there are also solutions for concrete-to-steel; steel-to-steel, renovation projects – and even a maintenance free alternative to wrapped parapets.

All products have the security of independent BBA Certification, which provides NHBC approval. Contact Schöck on 01865 290 890; or for full details of the Isokorb and Stacon products visit the solutions page on the website at www.schoeck.com/en/solutions





Warning Labels

Warning notices to reduce the risk of future pipe damage if the floor finish is replaced.



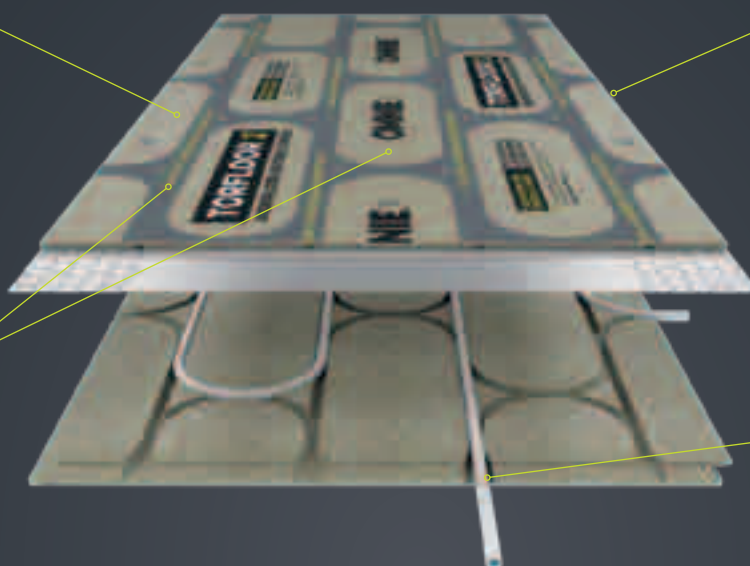
New Chipboard Covering Layer

Covering chipboard layer is pre-cut with the pipe channel pattern, allowing the layer to slot precisely over the warm water pipes once installed in the chipboard layer.



Even Easier Installation

Unique pre-printed chipboard layer shows where the pipe channels are, eliminating the risk of floor covering fixings damaging the pipe. Locator guides show where screws should be placed.



Ultra Fast Warm Up Times

The pipe sits proud in the chipboard floor layer, ensuring the pipe is in as close contact with the floor finish as possible when the finishing chipboard layer is slotted in place over the pipe.

TorFloor 2[®] Twice as easy

TorFloor 2[®] reduces installation risk and delivers the best possible heating performance.

OMNIE°



UNDERFLOOR HEATING & COOLING.
HEAT PUMPS. COMPLETE SYSTEM DESIGN.
TRIED. TESTED. TRUSTED.

Got a project in mind?

Call 01392 36 36 05 or visit [omnie.co.uk](https://www.omnie.co.uk)